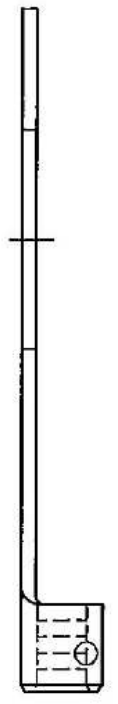
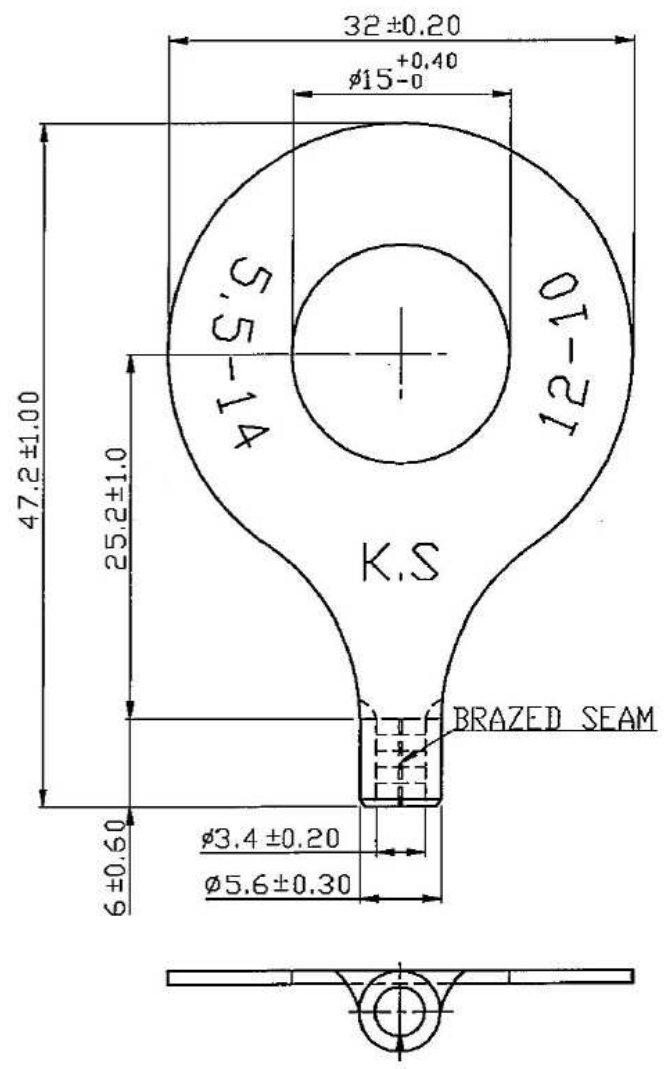


REVISIONS					REV	ZONE	ECO#	DESCRIPTION	DRAW	APPD	DATE
					A			INITIAL RELEASE	KC	-	



- NOTES:**
1. MAXIMUM ELECTRIC CURRENT: AWG 12: 35A
AWG 10: 50A
 2. WIRE RANGE: 12-10 AWG (4-6 mm²)
 3. SURFACE TREATMENT: TIN PLATED
 4. THICKNESS: 1.00 mm

NOTE: CAD GENERATED DRAWING DO NOT UPDATE MANUALLY.

TITLE 12-10 AWG RING TERM, NON-INSULATED				PART NUMBER IPACC-R-NB5-14					
<small>UNLESS OTHERWISE SPECIFIED, DIMENSIONS ARE IN MM TOLERANCE EXCEPT AS NOTED: 0 - 14 mm ±0.20 15-30mm ±0.40 > 30mm ±0.30 30-75mm ±0.50</small>									
<small>THIRD ANGLE PROJECTION</small>				<small>DRAW</small> KC		<small>DATE</small> 4/3/2020		<small>REV</small> A	
<small>DATE CODE</small> 2A589		<small>SIZE</small> A		<small>SCALE</small> NTS		<small>SHEET</small> 1 OF 1		<small>©COPYRIGHT 2018 PEI-GENESIS ENGINEERING PRODUCT DEVELOPMENT</small>	
<small>2180 Hornig Road, Philadelphia, PA 19116</small>								<small>NOTICE OF CONFIDENTIALITY THIS DRAWING IS THE PROPERTY OF PEI-GENESIS. ALL RIGHTS RESERVED. REPRODUCTION BY ANY MEANS OR DISTRIBUTION TO THIRD PARTIES IS STRICTLY PROHIBITED WITHOUT THE WRITTEN PERMISSION OF AN AUTHORIZED AGENT OF PEI-GENESIS.</small>	