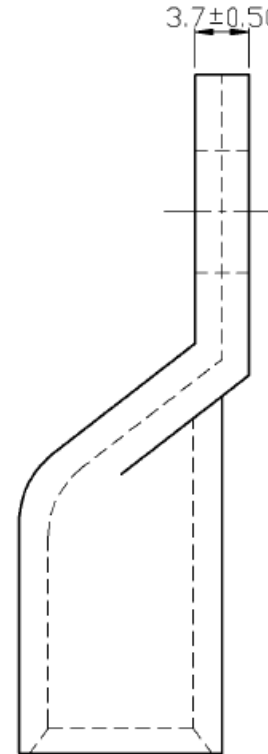
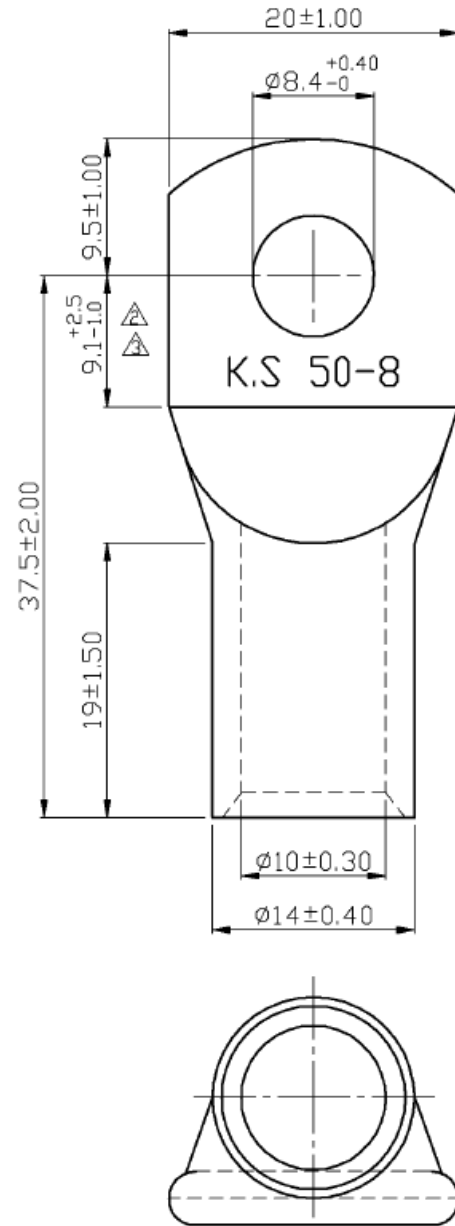


REVISIONS				REV	ZONE	ECO#	DESCRIPTION	DRAW	APPD	DATE
				A			INITIAL RELEASE	KC	-	



NOTES:

1. MAXIMUM ELECTRIC CURRENT: AWG 1/0: 230A
2. WIRE RANGE: 1/0 AWG (50 mm²)
3. SURFACE TREATMENT: TIN PLATED
4. THICKNESS: 2.00 mm

NOTE: CAD GENERATED DRAWING DO NOT UPDATE MANUALLY.

PART NUMBER		PART NUMBER		PART NUMBER	
1/0 AWG LUG, NON-INSULATED		IPACC-T-LK50-8		SURE-SEAL	
UNLESS OTHERWISE SPECIFIED, DIMENSIONS ARE IN MM		TOLERANCE EXCEPT AS NOTED:		2180 Hornig Road, Philadelphia, PA 19116	
Ø 14 mm 10-20		18-30mm 10-40		NOTICE OF CONFIDENTIALITY	
Ø 12.8mm 10-30		30-75mm 10-50		THIS DRAWING IS THE PROPERTY OF PEI-GENESIS. ALL RIGHTS RESERVED. REPRODUCTION BY ANY MEANS OR DISTRIBUTION TO THIRD PARTIES IS STRICTLY PROHIBITED WITHOUT THE WRITTEN PERMISSION OF AN AUTHORIZED AGENT OF PEI-GENESIS.	
THIRD ANGLE PROJECTION		DATE		DATE	
DRAWN		DATE		DATE	
KC		4/3/2020		A	
SHEET 1 OF 1		SHEET 1 OF 1		SHEET 1 OF 1	
SCALE		SCALE		SCALE	
A		A		A	
2A589		2A589		2A589	
DATE CODE		DATE CODE		DATE CODE	
2A589		2A589		2A589	