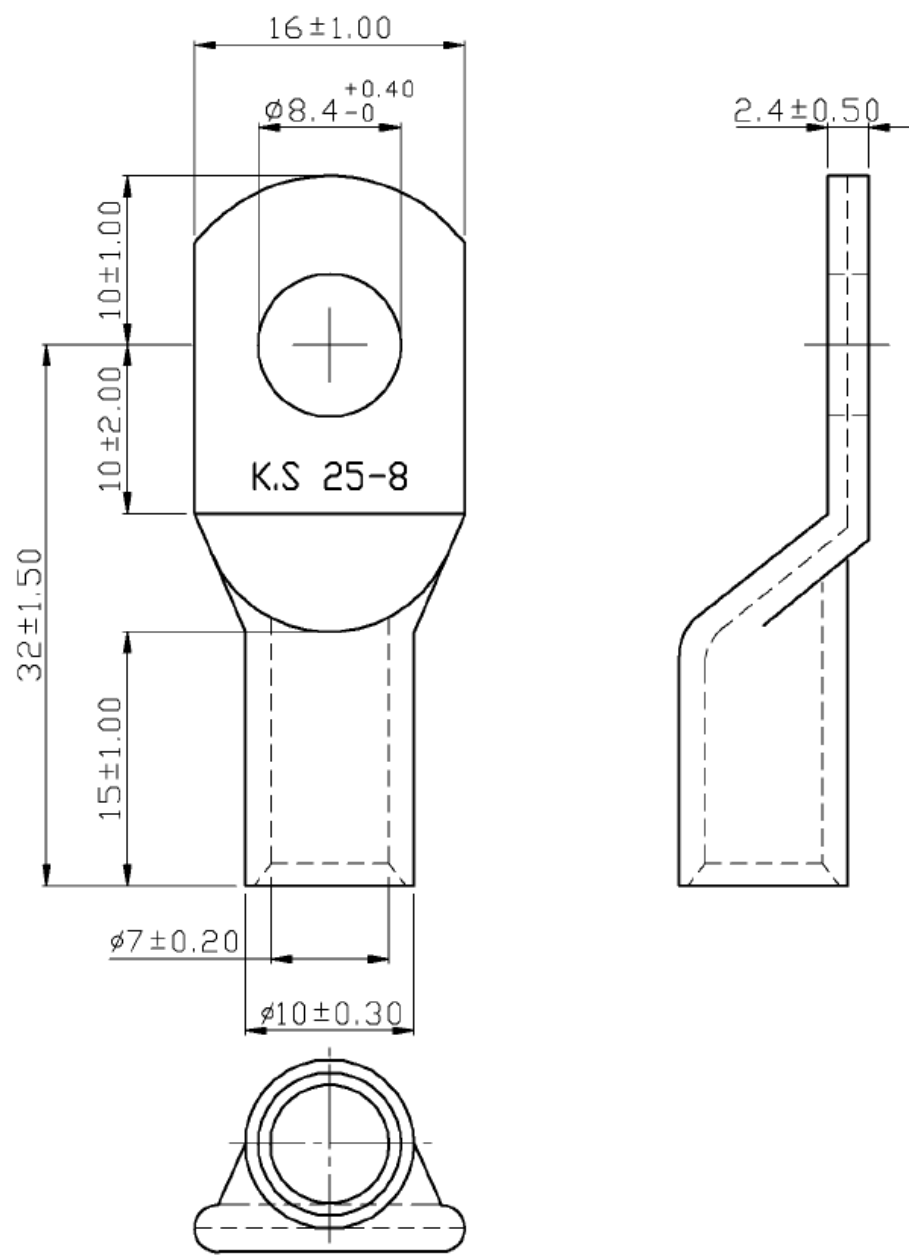


REVISIONS				REV	ZONE	ECO#	DESCRIPTION	DRAW	APPD	DATE
A			INITIAL RELEASE	KC	-					



- NOTES:**
1. MAXIMUM ELECTRIC CURRENT: AWG 4: 125A
  2. WIRE RANGE: 4 AWG (25 mm<sup>2</sup>)
  3. SURFACE TREATMENT: TIN PLATED
  4. THICKNESS: 1.50 mm

NOTE: CAD GENERATED DRAWING DO NOT UPDATE MANUALLY.

DATE CODE: 2A589		PART NUMBER: IPACC-T-LK25-8		 2180 Hornig Road, Philadelphia, PA 19116	
SIZE: A	SCALE: NTS	SHEET 1 OF 1		UNLESS OTHERWISE SPECIFIED, DIMENSIONS ARE IN MM TOLERANCE EXCEPT AS NOTED: Ø 14 mm 10.20 18-30mm 10.40 6. 25mm 10.30 30-75mm 10.50	NOTICE OF CONFIDENTIALITY THIS DRAWING IS THE PROPERTY OF PEI-GENESIS. ALL RIGHTS RESERVED. REPRODUCTION BY ANY MEANS OR DISTRIBUTION TO THIRD PARTIES IS STRICTLY PROHIBITED WITHOUT THE WRITTEN PERMISSION OF AN AUTHORIZED AGENT OF PEI-GENESIS.
DRAWN: chodzk		DATE: 4/7/2020	REV: A	COPYRIGHT 2018 PEI-GENESIS ENGINEERING PRODUCT DEVELOPMENT	