

Amphenol SCE2/Terrapin Series



MINIATURE PUSH-PULL CONNECTOR FOR HARSH APPLICATIONS

Amphenol's SCE2 Terrapin series of miniature push-pull connectors are environmentally-sealed for use in harsh environments. They offer silent mating with high mating cycles and a lockable coupling ring to prevent connector break-away. For more product details, please see full specifications below.

APPLICATIONS

- Radios
- GPS units
- LAN switches and routers
- Headsets
- Computer systems
- Gigabit ethernet

TECHNICAL SPECIFICATIONS

MATERIALS AND FINISHES

Shell Material	Brass / Aluminum
Shell Plating	Black-silver (non-reflective) / Black Zinc Nickel (Aluminium only)
Contact Material	Copper alloy
Contact Plating	1µM of gold over nickel

ELECTRICAL DATA

Current Rating	26AWG contacts: 1.5A DC	20AWG contacts: 7.5A DC
Shell-to-Shell Continuity	10mΩ max (shielded)	200mΩ max (unshielded)
Contact Resistance	5mΩ initial 10mΩ maximum	
Insulation Resistance	1000mΩ minimum ; production tested to 500mΩ	
Working Voltage	400Vac (rms)	
Dielectric Withstanding Voltage	2mA maximum leakage	

TECHNICAL

Mating Durability	2000+ cycles
Backshell Overtorque	19.914 lb.f.in. / 2.25 Nm
Panel Nut Overtorque	19.914 lb.f.in. / 2.25 Nm
Non-magnetic	Yes

ENVIRONMENTAL

Operating Temperature Range	-67°F to + 248°F (-55°C to + 125°C)
Temperature Endurance	250 hours +125°C
Sealing (mated and unmated)	IP68, 1 hour at 2 meters*
Air Leakage	Less than 1cc per hour
Salt Spray	Black-silver 1000-hours, Black Zinc Nickel: 500-hours
Altitude Immersion	70,000 feet
RoHS-Compliant	Yes
Suitable for RoHS-Compliant Soldering	Yes

*Contact us if greater depth/duration of sealing is required

RECEPTACLES

CABLE-MOUNT RECEPTACLES (PINS) SOLDER BUCKETS ONLY					PANEL-MOUNT RECEPTACLES (PINS)		
# of Contacts	01K Receptacle with Integral Backshell	01T Receptacle with Threaded Backshell	L1K Locking Receptacle w/ Integral Backshell	L1T Locking Receptacle w/ Threaded Backshell	07A Rear Mount Jam Nut Receptacle	71A Front Mount Jam Nut Receptacle	Shell Size
7	SCE2-B-01K06-07P*	SCE2-B-01T06-07P*-003	SCE2-B-L1K06-07P*	SCE2-B-L1T06-07P*-003	SCE2-B-07A06-07P*-XXX	SCE2-B-71A06-07P*-XXX	6
10	SCE2-B-01K07-10AP*	SCE2-B-01T07-10AP*-003	SCE2-B-L1K07-10AP*	SCE2-B-L1T07-10AP*-003	SCE2-B-07A07-10AP*-XXX	SCE2-B-71A07-10AP*-XXX	7
12	SCE2-B-01K07-12P*	SCE2-B-01T07-12P*-003	SCE2-B-L1K07-12P*	SCE2-B-L1T07-12P*-003	SCE2-B-07A07-12P*-XXX	SCE2-B-71A07-12P*-XXX	7
14	SCE2-B-01K07-14P*	SCE2-B-01T07-14P*-003	SCE2-B-L1K07-14P*	SCE2-B-L1T07-14P*-003	SCE2-B-07A07-14P*-XXX	SCE2-B-71A07-14P*-XXX	7
19	SCE2-B-01K08-19P*	SCE2-B-01T08-19P*-003	SCE2-B-L1K08-19P*	SCE2-B-L1T08-19P*-003	SCE2-B-07A08-19P*-XXX	SCE2-B-71A08-19P*-XXX	8
26	SCE2-B-01K09-26P*	SCE2-B-01T09-26P*-003	SCE2-B-L1K09-26P*	SCE2-B-L1T09-26P*-003	SCE2-B-07A09-26P*-XXX	SCE2-B-71A09-26P*-XXX	9
37	SCE2-B-01K10-37P*	SCE2-B-01T10-37P*-003	SCE2-B-L1K10-37P*	SCE2-B-L1T10-37P*-003	SCE2-B-07A10-37P*-XXX	SCE2-B-71A10-37P*-XXX	10

* = Include keyway orientations N,A,B,C,D Add -985 for grounding spring on L1K and L1T types only XXX = Contact Termination Code use -001 for PCB use -002 for Solder Buckets

➔ See page 308 for layouts and keyways.



PLUGS

CABLE-MOUNT PLUGS (SOCKETS)				IN-LINE PLUGS (SOCKETS) SOLDER BUCKETS ONLY		
# of Contacts	76A Rear Mount Jam Nut Plug	67A Front Mount Jam Nut Plug	76T Rear Mount Jam Nut w/ Threaded Backshell Plug	06K In-Line Plug w/ Integral Backshell	06T In-Line Plug w/ Threaded Backshell	Shell Size
7	SCE2-B-76A06-07S*-XXX	SCE2-B-67A06-07S*-XXX	SCE2-B-76T06-07S*-002	SCE2-B-06K06-07S*	SCE2-B-06T06-07S*-003	6
10	SCE2-B-76A07-10AS*-XXX	SCE2-B-67A07-10AS*-XXX	SCE2-B-76T07-10AS*-002	SCE2-B-06K07-10AS*	SCE2-B-06T07-10AS*-003	7
12	SCE2-B-76A07-12S*-XXX	SCE2-B-67A07-12S*-XXX	SCE2-B-76T07-12S*-002	SCE2-B-06K07-12S*	SCE2-B-06T07-12S*-003	7
14	SCE2-B-76A07-14S*-XXX	SCE2-B-67A07-14S*-XXX	SCE2-B-76T07-14S*-002	SCE2-B-06K07-14S*	SCE2-B-06T07-14S*-003	7
19	SCE2-B-76A08-19S*-XXX	SCE2-B-67A08-19S*-XXX	SCE2-B-76T08-19S*-002	SCE2-B-06K08-19S*	SCE2-B-06T08-19S*-003	8
26	SCE2-B-76A09-26S*-XXX	SCE2-B-67A09-26S*-XXX	SCE2-B-76T09-26S*-002	SCE2-B-06K09-26S*	SCE2-B-06T09-26S*-003	9
37	SCE2-B-76A10-37S*-XXX	SCE2-B-67A10-37S*-XXX	SCE2-B-76T10-37S*-002	SCE2-B-06K10-37S*	SCE2-B-06T10-37S*-003	10

XXX = Contact termination code use -001 for PCB use -002 for solder buckets * = Include keyway orientations N,A,B,C,D

➔ See page 308 for layouts and keyways.

NOTE: Use prefix SCE2-ZN for Black Zinc Nickel aluminum version.

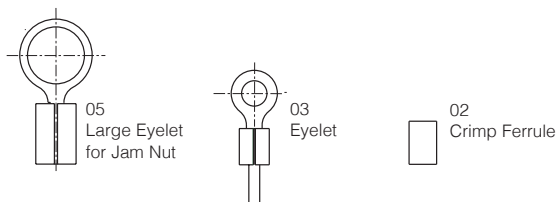
RECEPTACLE ACCESSORIES

DUSTCAPS FOR RECEPTACLES SHRINK BOOTS



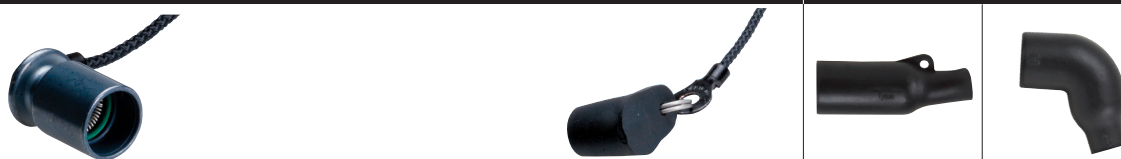
Shell Size	Metal	Rubber	Metal	Rubber	Metal	Rubber	Straight	Cable Exit Dia. (6.10)	Right Angle	Cable Exit Dia. (6.35)
	with Crimp Ferrule		with Eyelet		with Large Eyelet for Jam Nut					
6	390-5056-06-###-02	390-5063-06-###-02	390-5056-06-###-03	390-5063-06-###-03	390-5056-06-###-05	390-5063-06-###-05	123GB-0798-06-S	0.24 (6.10)	123GB-0798-06-R	0.22 (5.59)
7	390-5056-07-###-02	390-5063-07-###-02	390-5056-07-###-03	390-5063-07-###-03	390-5056-07-###-05	390-5063-07-###-05	123GB-0798-07-S	0.24 (6.10)	123GB-0798-07-R	0.25 (6.35)
8	390-5056-08-###-02	390-5063-08-###-02	390-5056-08-###-03	390-5063-08-###-03	390-5056-08-###-05	390-5063-08-###-05	123GB-0798-08-S	0.24 (6.10)	123GB-0798-08-R	0.25 (6.35)
9	390-5056-09-###-02	390-5063-09-###-02	390-5056-09-###-03	390-5063-09-###-03	390-5056-09-###-05	390-5063-09-###-05	123GB-0798-09-S	0.24 (6.10)	123GB-0798-09-R	0.25 (6.35)
10	390-5056-10-###-02	390-5063-10-###-02	390-5056-10-###-03	390-5063-10-###-03	390-5056-10-###-05	390-5063-10-###-05	123GB-0798-10-S	0.24 (6.10)	123GB-0798-10-R	0.25 (6.35)

= Length of cord 060,130,180 mm (other options available, please contact us)



PLUG ACCESSORIES

DUSTCAPS FOR PLUGS SHRINK BOOTS



Shell Size	Metal	Rubber	Metal	Rubber	Metal	Rubber	Straight	Cable Exit Dia. (6.10)	Right Angle	Cable Exit Dia. (6.35)
	with Crimp Ferrule		with Eyelet		with Large Eyelet for Jam Nut					
6	390-5057-06-###-02	390-5064-06-###-02	390-5057-06-###-03	390-5064-06-###-03	390-5057-06-###-05	390-5064-06-###-05	123GB-0798-06-S	0.24 (6.10)	123GB-0798-06-R	0.22 (5.59)
7	390-5057-07-###-02	390-5064-07-###-02	390-5057-07-###-03	390-5064-07-###-03	390-5057-07-###-05	390-5064-07-###-05	123GB-0798-07-S	0.24 (6.10)	123GB-0798-07-R	0.25 (6.35)
8	390-5057-08-###-02	390-5064-08-###-02	390-5057-08-###-03	390-5064-08-###-03	390-5057-08-###-05	390-5064-08-###-05	123GB-0798-08-S	0.24 (6.10)	123GB-0798-08-R	0.25 (6.35)
9	390-5057-09-###-02	390-5064-09-###-02	390-5057-09-###-03	390-5064-09-###-03	390-5057-09-###-05	390-5064-09-###-05	123GB-0798-09-S	0.24 (6.10)	123GB-0798-09-R	0.25 (6.35)
10	390-5057-10-###-02	390-5064-10-###-02	390-5057-10-###-03	390-5064-10-###-03	390-5057-10-###-05	390-5064-10-###-05	123GB-0798-10-S	0.24 (6.10)	123GB-0798-10-R	0.25 (6.35)

= Length of cord 060,130,180 mm (other options available, please contact us.)

All dimensions in inches (millimeters in parenthesis)

INSERT ARRANGEMENTS REAR VIEW OF THE PLUG

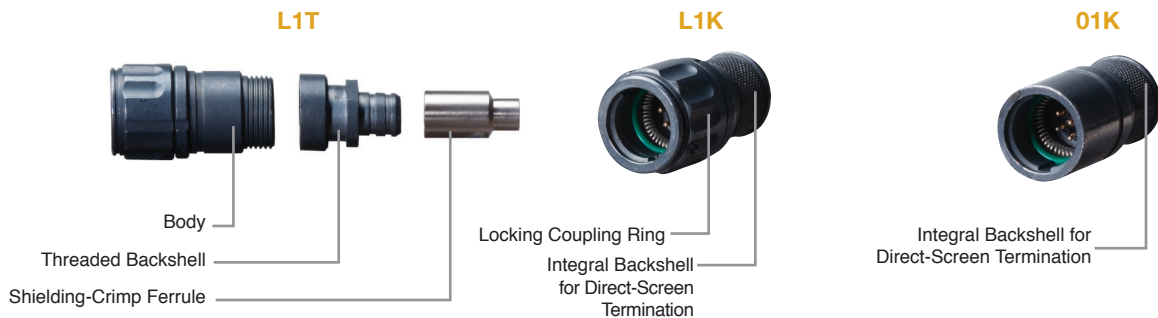
● 20AWG contacts ○ 23AWG contacts ⊕ 28AWG contacts

SHELL SIZE	06		07		
LAYOUT	06-07	06-09	07-10A	07-12	07-14
SHELL SIZE	07	08	09	10	
LAYOUT	07-19	08-19	09-26	10-37	

PLUG AND RECEPTACLE KEYWAY ORIENTATION

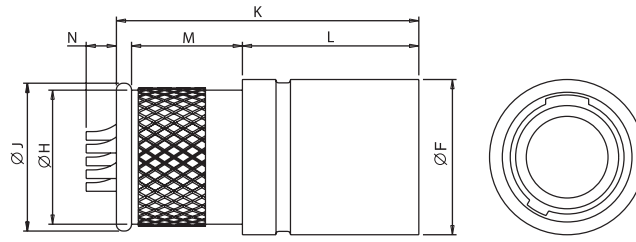
KEYWAY ORIENTATION LETTER	PLUG KEYWAY ORIENTATION	RECEPTACLE KEYWAY ORIENTATION	KEYWAY ORIENTATION LETTER	PLUG KEYWAY ORIENTATION	RECEPTACLE KEYWAY ORIENTATION
N			C		
A			D		
B					

TERMINOLOGY



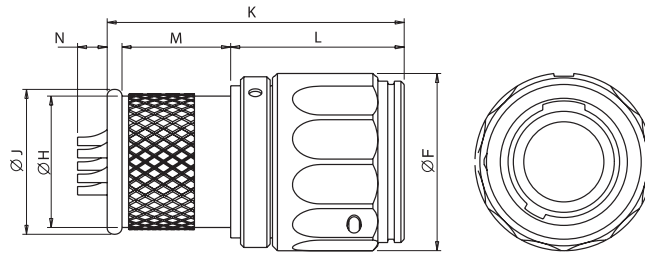
RECEPTACLES (PINS)

SCE2-X-01K - IN-LINE RECEPTACLE WITH INTEGRAL BACKSHELL



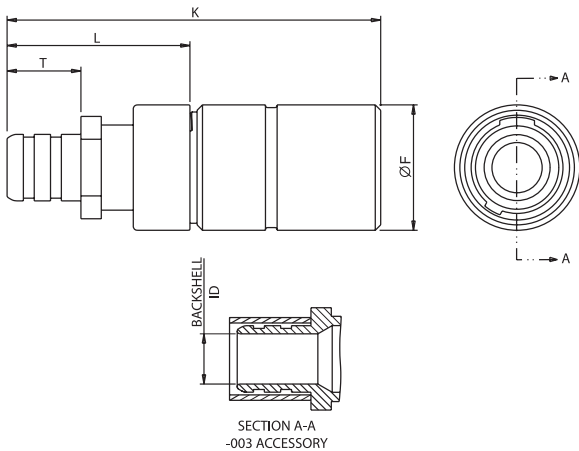
SHELL SIZE	ØF	ØH	ØJ	K	L	M	N
06	.462 (11.73)	.399 (10.13)	.440 (11.18)	.900 (22.86)	.525 (13.34)	.330 (8.38)	.090 (2.29)
07	.575 (14.61)	.460 (11.68)	.505 (12.83)	.900 (22.86)	.525 (13.34)	.330 (8.38)	.090 (2.29)
08	.620 (15.75)	.581 (14.76)	.620 (15.75)	.900 (22.86)	.525 (13.34)	.330 (8.38)	.090 (2.29)
09	.690 (17.51)	.651 (16.54)	.690 (17.53)	.970 (24.64)	.525 (13.34)	.400 (10.16)	.090 (2.29)
10	.760 (19.29)	.721 (18.31)	.760 (19.30)	.970 (24.64)	.525 (13.34)	.400 (10.16)	.090 (2.29)

SCE2-X-L1K - IN-LINE LATCHING RECEPTACLE WITH INTEGRAL BACKSHELL



SHELL SIZE	ØF	ØH	ØJ	K	L	M	N
06	.540 (13.75)	.399 (10.14)	.440 (11.18)	.902 (22.91)	.527 (13.39)	.330 (8.38)	.090 (2.29)
07	.610 (15.50)	.447 (11.35)	.505 (12.83)	.902 (22.91)	.527 (13.39)	.330 (8.38)	.090 (2.29)
08	.700 (17.77)	.581 (14.75)	.620 (15.75)	.902 (22.91)	.527 (13.39)	.330 (8.38)	.090 (2.29)
09	.770 (19.56)	.651 (16.54)	.690 (17.53)	.972 (24.69)	.527 (13.39)	.400 (10.16)	.090 (2.29)
10	.840 (21.34)	.721 (18.31)	.760 (19.30)	.972 (24.69)	.527 (13.39)	.400 (10.16)	.090 (2.29)

SCE2-X-01T - IN-LINE RECEPTACLE WITH THREADED BACKSHELL

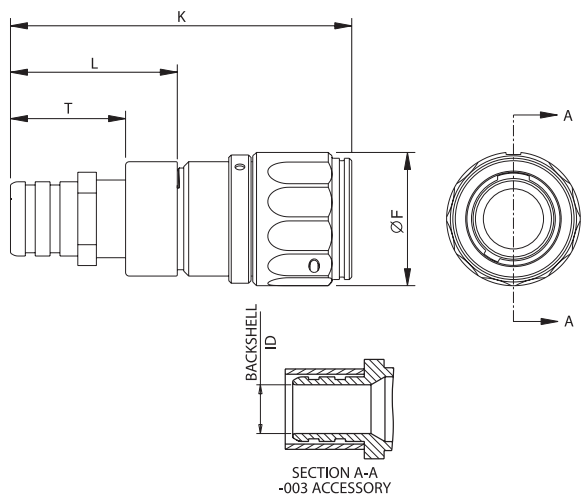


SHELL SIZE	ØF	K	L	T	BACKSHELL ID
					-003
06	.462 (11.73)	1.377 (34.98)	.674 (17.12)	.272 (6.91)	.185 (4.70)
07	.575 (14.61)	1.377 (34.98)	.674 (17.12)	.272 (6.91)	.265 (6.73)
08	.620 (15.75)	1.377 (34.98)	.674 (17.12)	.272 (6.91)	.345 (8.76)
09	.690 (17.53)	1.447 (36.75)	.674 (17.12)	.272 (6.91)	.425 (10.80)
10	.760 (19.30)	1.447 (36.75)	.674 (17.12)	.272 (6.91)	.505 (12.83)

All dimensions in inches (millimeters in parenthesis)

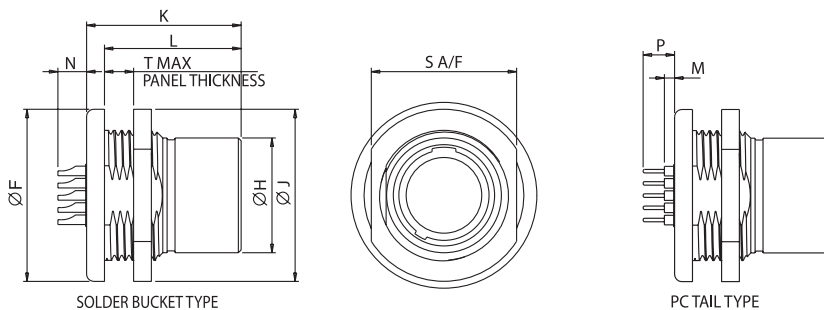
RECEPTACLES (PINS)

SCE2-X-L1T - IN-LINE LATCHING RECEPTACLE WITH THREADED BACKSHELL



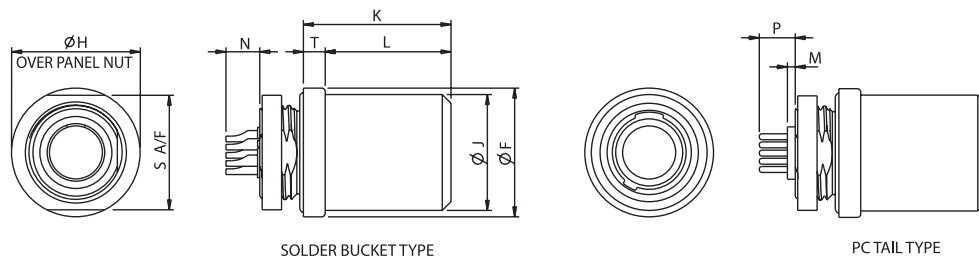
SHELL SIZE	ØF	K	L	T	BACKSHELL ID -003
Size 06	.540 (13.70)	1.379 (35.03)	.674 (17.12)	.465 (11.81)	.185 (4.70)
Size 07	.610 (15.50)	1.379 (35.03)	.674 (17.12)	.465 (11.81)	.265 (6.73)
Size 08	.700 (17.77)	1.379 (35.03)	.674 (17.12)	.465 (11.81)	.345 (8.76)
Size 09	.770 (19.56)	1.449 (36.80)	.674 (17.12)	.465 (11.81)	.425 (10.80)
Size 10	.840 (21.34)	1.470 (37.34)	.674 (17.12)	.465 (11.81)	.505 (12.83)

SCE2-X-07A - JAM NUT - REAR MOUNT RECEPTACLE



SHELL SIZE	ØF	ØH	ØJ	K	L	M	N	P	SAF	TMAX
Size 06	.750 (19.05)	.462 (11.73)	.750 (19.05)	.835 (21.21)	.738 (18.75)	.055 (1.40)	.155 (3.94)	.170 (4.42)	.665 (16.88)	.157 (4.45)
Size 07	.895 (22.73)	.575 (14.61)	.895 (22.73)	.835 (21.21)	.738 (18.75)	.055 (1.40)	.155 (3.94)	.170 (4.42)	.750 (19.05)	.157 (4.45)
Size 08	.930 (23.62)	.620 (15.75)	.930 (23.62)	.835 (21.21)	.738 (18.75)	.055 (1.40)	.155 (3.94)	.170 (4.42)	.785 (19.94)	.157 (4.45)
Size 09	1.000 (25.38)	.690 (17.53)	1.005 (25.53)	.905 (22.99)	.808 (20.52)	N/A	.155 (3.94)	.170 (4.42)	.863 (21.92)	.157 (4.45)
Size 10	1.070 (27.18)	.760 (19.30)	1.080 (27.43)	.905 (22.99)	.808 (20.52)	N/A	.155 (3.94)	.170 (4.42)	.940 (23.88)	.157 (4.45)

SCE2-X-71A - JAM NUT - FRONT MOUNT RECEPTACLE

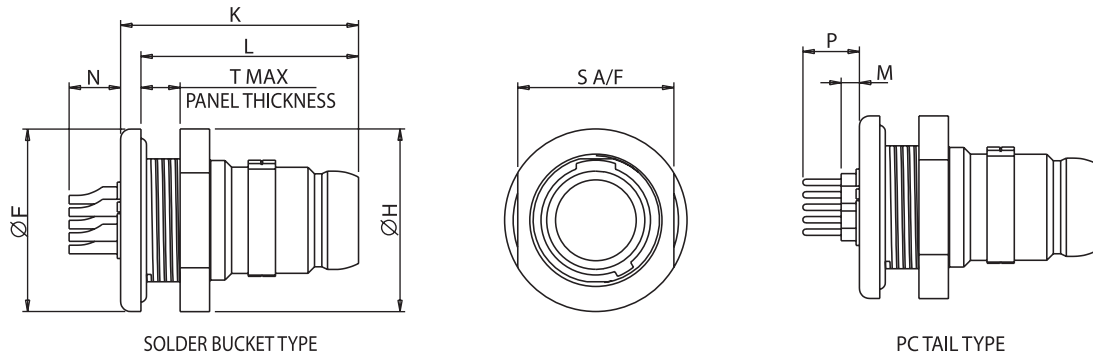


SHELL SIZE	ØF	ØH	ØJ	K	L	M	N	P	SAF	TMAX
Size 06	N/A	.531 (13.48)	.550 (13.97)	.677 (17.19)	N/A	.015 (0.38)	.113 (2.87)	.130 (3.30)	.470 (11.94)	N/A
Size 07	.750 (19.04)	.575 (14.61)	.750 (19.04)	.677 (17.19)	.577 (14.65)	.015 (0.38)	.113 (2.87)	.130 (3.30)	.665 (16.89)	.100 (2.54)
Size 08	.760 (19.30)	.620 (15.75)	.760 (19.30)	.877 (22.28)	.677 (17.20)	.015 (0.38)	.113 (2.87)	.130 (3.30)	.825 (20.96)	.100 (2.54)
Size 09	.890 (22.61)	.690 (17.53)	.890 (22.61)	.947 (24.05)	.747 (18.97)	N/A	.113 (2.87)	.060 (1.52)	.955 (24.26)	.100 (2.54)
Size 10	.930 (20.62)	.760 (19.30)	.930 (20.62)	.947 (24.05)	.747 (18.97)	N/A	.113 (2.87)	.060 (1.52)	.995 (25.27)	.100 (2.54)

All dimensions in inches (millimeters in parenthesis)

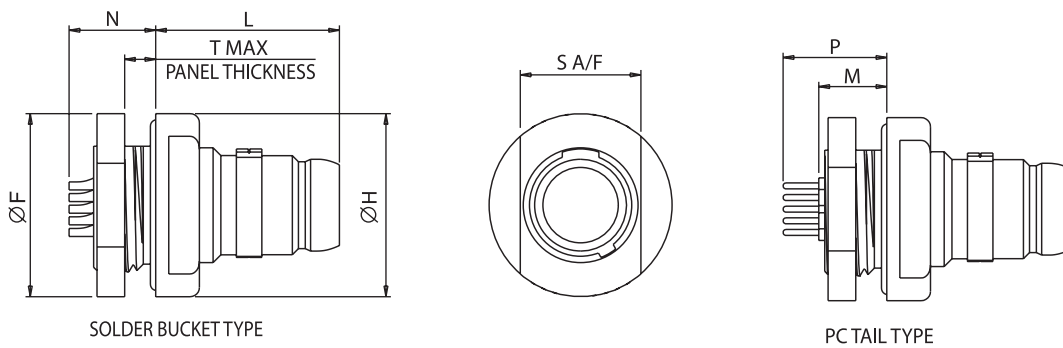
PLUGS (SOCKETS)

SCE2-X-76A - JAM NUT - REAR MOUNT PLUG



SHELL SIZE	ØF	ØH	K	L	M	N	P	S A/F	T MAX.
06	.550 (13.97)	.550 (13.97)	.716 (18.19)	.655 (16.64)	.055 (1.40)	.155 (3.94)	.170 (4.32)	.470 (11.94)	.118 (3.00)
07	.620 (15.75)	.600 (15.24)	.716 (18.19)	.655 (16.64)	.055 (1.40)	.155 (3.94)	.170 (4.32)	.510 (12.95)	.118 (3.00)
08	.760 (19.30)	.760 (19.30)	.716 (18.19)	.655 (16.64)	.055 (1.40)	.155 (3.94)	.170 (4.32)	.706 (17.93)	.118 (3.00)
09	.890 (22.61)	.830 (21.08)	.802 (20.37)	.725 (18.42)	.114 (2.89)	.069 (1.75)	.234 (5.94)	.745 (18.92)	.125 (3.18)
10	.930 (20.62)	.900 (22.86)	.802 (20.37)	.725 (18.42)	.114 (2.89)	.069 (1.75)	.234 (5.94)	.808 (20.52)	.125 (3.18)

SCE2-X-67A - JAM NUT - FRONT MOUNT PLUG

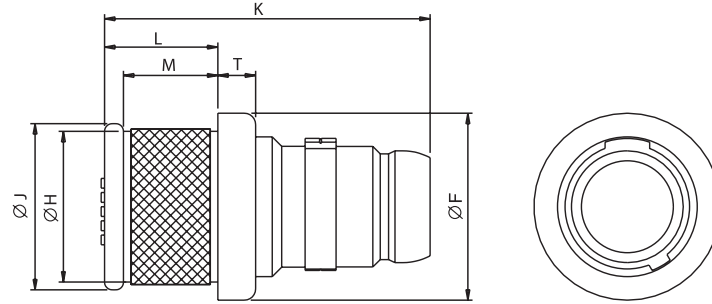


SHELL SIZE	ØF	ØH	L	M	N	P	S A/F	T MAX.
06	.590 (14.99)	.590 (14.99)	.592 (13.04)	.324 (8.23)	.279 (7.09)	.424 (10.78)	.525 (13.34)	.100 (2.54)
07	.750 (19.05)	.750 (19.05)	.592 (13.04)	.324 (8.23)	.279 (7.09)	.444 (11.27)	.665 (16.89)	.100 (2.54)
08	.760 (19.30)	.760 (19.30)	.592 (13.04)	.324 (8.23)	.279 (7.09)	.444 (11.27)	.706 (17.93)	.100 (2.54)
09	.890 (22.61)	.890 (22.61)	.662 (16.82)	.254 (6.45)	.209 (5.31)	.354 (8.99)	.955 (24.26)	.100 (2.54)
10	.930 (23.62)	.930 (23.62)	.662 (16.82)	.254 (6.45)	.209 (5.31)	.354 (8.99)	.995 (25.27)	.100 (2.54)

All dimensions in inches (millimeters in parenthesis)

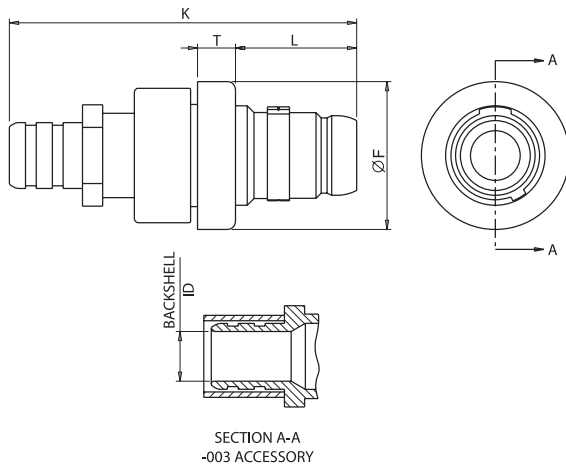
PLUGS (SOCKETS)

SCE2-X-06K - IN-LINE PLUG WITH INTEGRAL BACKSHELL



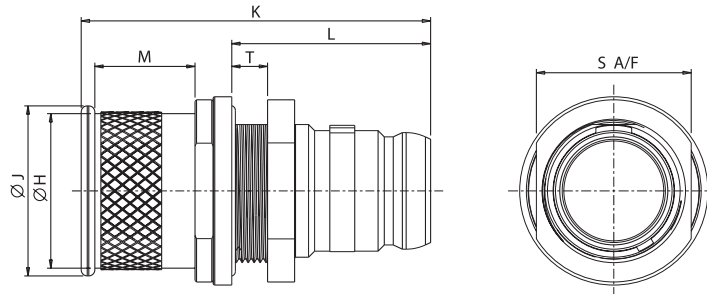
SHELL SIZE	ØF	ØH	ØJ	K	L	M	T
06	.495 (12.57)	.412 (10.46)	.440 (11.18)	.862 (21.89)	.300 (7.62)	.250 (6.35)	.100 (2.54)
07	.575 (14.61)	.460 (11.68)	.505 (12.83)	.862 (21.89)	.300 (7.62)	.250 (6.35)	.100 (2.54)
08	.650 (16.51)	.593 (15.06)	.620 (15.75)	.862 (21.89)	.300 (7.62)	.250 (6.35)	.100 (2.54)
09	.720 (18.23)	.663 (16.84)	.690 (17.53)	.932 (23.67)	.317 (8.05)	.267 (6.78)	.100 (2.54)
10	.790 (20.06)	.733 (18.61)	.760 (19.30)	.932 (23.67)	.317 (8.05)	.267 (6.78)	.100 (2.54)

SCE2-X-06T - IN-LINE PLUG WITH THREADED BACKSHELL



SHELL SIZE	ØF	K	L	T	BACKSHELL ID
					-003
06	.550 (13.97)	1.292 (32.82)	.451 (11.46)	.141 (3.58)	.185 (4.70)
07	.630 (16.00)	1.292 (32.82)	.451 (11.46)	.141 (3.58)	.265 (6.73)
08	.705 (17.91)	1.292 (32.82)	.451 (11.46)	.141 (3.58)	.345 (8.76)
09	.780 (19.81)	1.362 (34.60)	.521 (13.23)	.141 (3.58)	.425 (10.80)
10	.855 (21.72)	1.362 (34.60)	.521 (13.23)	.141 (3.58)	.505 (12.83)

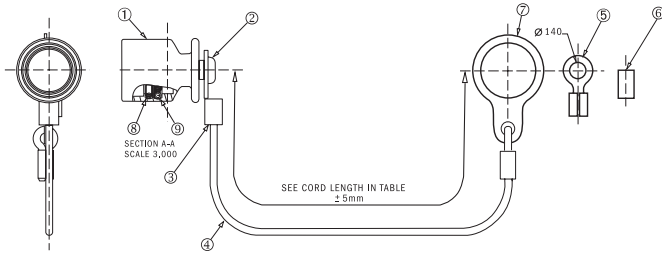
SCE2-X-76T - JAM NUT - REAR MOUNT PLUG WITH SCREW-ON BACKSHELL



SHELL SIZE	ØH	ØJ	K	L	M	S A/F	T MAX.
06	.460 (11.68)	.490 (12.45)	1.150 (29.21)	.655 (16.64)	.330 (8.38)	.470 (11.94)	.118 (3.00)
07	.600 (15.24)	.560 (14.21)	1.150 (29.21)	.655 (16.64)	.330 (8.38)	.510 (12.95)	.118 (3.00)
08	.730 (18.54)	.730 (18.53)	1.150 (29.21)	.655 (16.64)	.330 (8.38)	.706 (17.93)	.118 (3.00)
09	.790 (20.07)	.793 (20.13)	1.237 (31.40)	.725 (18.42)	.330 (8.38)	.745 (18.92)	.125 (3.18)
10	.860 (21.84)	.900 (22.86)	1.220 (30.99)	.725 (18.42)	.330 (8.38)	.808 (20.52)	.125 (3.18)

All dimensions in inches (millimeters in parenthesis)

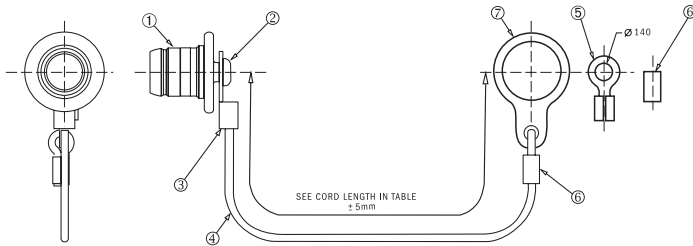
390-5057 - METAL DUSTCAP FOR PLUGS



SHELL SIZE	PART NUMBER	ITEM 1 - CAP	
		ØF	K
06	390-5057-06-XXX-XX	.464 (11.79)	.794 (20.17)
07	390-5057-07-XXX-XX	.545 (13.84)	.794 (20.17)
08	390-5057-08-XXX-XX	.620 (15.75)	.794 (20.17)
09	390-5057-09-XXX-XX	.695 (17.65)	.794 (20.17)
10	390-5057-10-XXX-XX	.770 (19.56)	.794 (20.17)

XXX = Length of cord 060, 130, 180 mm
 XX = 02 = Crimp ferrule
 03 = Eyelet
 05 = Large eyelet for jamnut

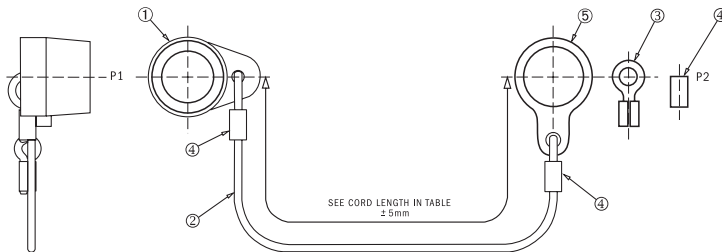
390-5056 - METAL DUSTCAP FOR RECEPTACLES



SHELL SIZE	PART NUMBER	ITEM 1 - CAP	
		ØF	K
06	390-5056-06-XXX-XX	.575 (14.61)	.664 (16.87)
07	390-5056-07-XXX-XX	.575 (14.61)	.664 (16.87)
08	390-5056-08-XXX-XX	.750 (19.05)	.664 (16.87)
09	390-5056-09-XXX-XX	.825 (20.95)	.664 (16.87)
10	390-5056-10-XXX-XX	.900 (22.86)	.664 (16.87)

XXX = Length of cord 060, 130, 180 mm
 XX = 02 = Crimp ferrule
 03 = Eyelet
 05 = Large eyelet for jamnut

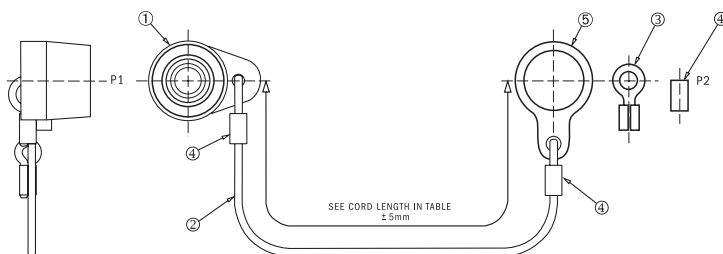
390-5064 - RUBBER DUSTCAP FOR PLUGS



SHELL SIZE	PART NUMBER	ITEM 1 - CAP	
		ØF	K
06	390-5064-06-XXX-XX	.450 (11.43)	.550 (13.97)
07	390-5064-07-XXX-XX	.525 (13.34)	.550 (13.97)
08	390-5064-08-XXX-XX	.595 (15.11)	.550 (13.97)
09	390-5064-09-XXX-XX	.665 (16.89)	.550 (13.97)
10	390-5064-10-XXX-XX	.735 (18.67)	.550 (13.97)

XXX = Length of cord 060, 130, 180 mm
 XX = 02 = Crimp ferrule
 03 = Eyelet
 05 = Large eyelet for jamnut

390-5063 - RUBBER DUSTCAP FOR RECEPTACLES



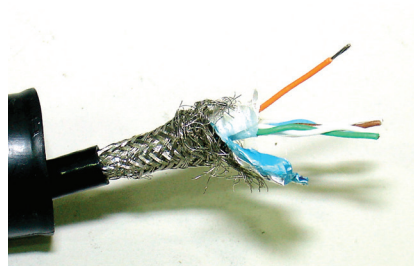
SHELL SIZE	PART NUMBER	ITEM 1 - CAP	
		ØF	K
06	390-5063-06-XXX-XX	.625 (15.88)	.550 (13.97)
07	390-5063-07-XXX-XX	.725 (18.42)	.550 (13.97)
08	390-5063-08-XXX-XX	.780 (19.81)	.550 (13.97)
09	390-5063-09-XXX-XX	.870 (22.10)	.550 (13.97)
10	390-5063-10-XXX-XX	.940 (23.88)	.550 (13.97)

XXX = Length of cord 060, 130, 180 mm
 XX = 02 = Crimp ferrule
 03 = Eyelet
 05 = Large eyelet for jamnut

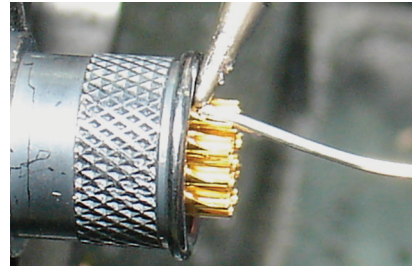
All dimensions in inches (millimeters in parenthesis)

RECOMMENDED SOLDER EQUIPMENT

- JBC soldering iron AD2700 set at approx. 662°F (350°C)
- JBC tip 2245-930
- Should adhere to IPC J-STD-001 Rev D Class 3, using IPC 610 for reference.

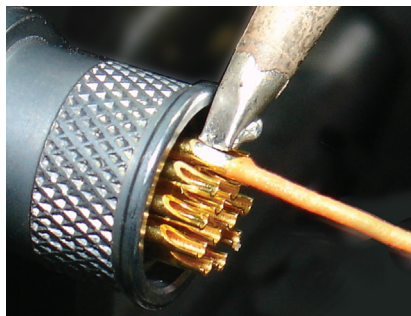


STEP 1: Slide the rear accessories over the wire bundle in the proper sequence for reassembly.

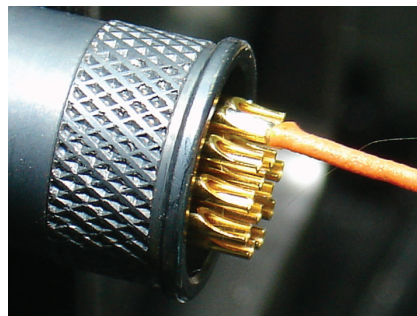


STEP 2: Strip wires .200" (5.08).

STEP 3: Pre-tin wire to be terminated.



STEP 4: Pre-tin the solder bucket. This should be done using the minimum temperature required while achieving the wetted solder joint. Remember to ensure a good solder bridge. Place the iron tip inside the bucket.



STEP 5: Terminate wire to the solder bucket, again using minimum heat while ensuring the required wetting. Place the iron tip inside the bucket and slide in the wire to be terminated. Always clean solder joints, ensuring that the contacts are not damaged.

STEP 6: Repeat steps for additional contacts. Terminate shield using banding termination or other method. Recover heat shrink boot starting on the connector and moving downward towards the cable. Adhesive should flow out of the boot.

ETHERNET WIRING



Rear view of connector

Termination process for 07-14 layout to CAT 6 Ethernet Cable

- Standard CAT 6 Ethernet RJ45 Patch lead terminated to the rear of the connector, as per instructions

Temperatures are °F (°C). All Dimensions in inches (millimeters in parenthesis).