

CONTACTS

PINS

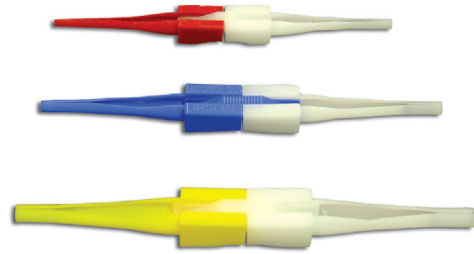
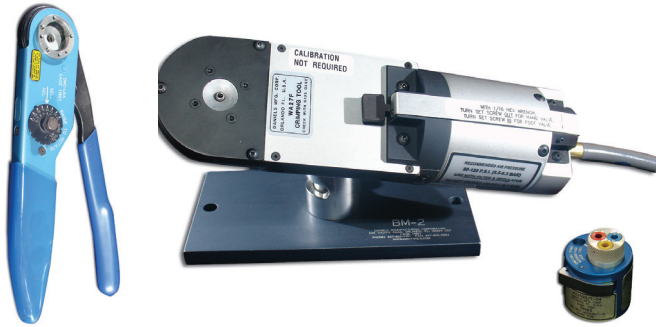
CONTACT SIZE	WIRE SIZE AWG	PIN CONTACT PART NUMBER	COLOR BANDS			WIRE STRIP LENGTHS	WIRE INSULATION RANGE		WIRE HOLE FILLER	COLOR
			1	2	3		MIN	MAX		
20	20, 22 & 24	M39029/4-110	Brown	Brown	Black	.1875 (4.77)	.040 (1.02)	.083 (2.11)	MS27488-20-2	Red
16	16, 18 & 20	M39029/4-111	Brown	Brown	Brown	.2812 (7.14)	.053 (1.35)	.103 (2.62)	MS27488-16-2	Blue
12	12 & 14	M39029/4-113	Brown	Brown	Orange	.2812 (7.14)	.097 (2.46)	.158 (4.01)	MS27488-12-2	Yellow
20 Alumel*	20, 22 & 24	M39029/9-134	Brown	Orange	Yellow	.1875 (4.77)	.040 (1.02)	.083 (2.11)	MS27488-20-2	Red
20 Chromel*	20, 22 & 24	M39029/9-135	Brown	Orange	Green	.1875 (4.77)	.040 (1.02)	.083 (2.11)	MS27488-20-2	Red
16 Fiber Optic*	-	MIL-T-29504/10	-	-	-	-	-	-	-	-
12 Coax*	-	Contact us	-	-	-	-	-	-	-	-

SOCKETS

CONTACT SIZE	WIRE SIZE AWG	PIN CONTACT PART NUMBER	COLOR BANDS			WIRE STRIP LENGTHS	WIRE INSULATION RANGE		WIRE HOLE FILLER	COLOR
			1	2	3		MIN	MAX		
20	20, 22 & 24	M39029/5-115	Brown	Brown	Green	.1875 (4.77)	.040 (1.02)	.083 (2.11)	MS27488-20-2	Red
16	16, 18 & 20	M39029/5-116	Brown	Brown	Blue	.2812 (7.14)	.053 (1.35)	.103 (2.62)	MS27488-16-2	Blue
12	12 & 14	M39029/5-118	Brown	Brown	Grey	.2812 (7.14)	.097 (2.46)	.158 (4.01)	MS27488-12-2	Yellow
20 Alumel*	20, 22 & 24	M39029/10-140	Brown	Yellow	Black	.1875 (4.77)	.040 (1.02)	.083 (2.11)	MS27488-20-2	Red
20 Chromel*	20, 22 & 24	M39029/10-141	Brown	Yellow	Brown	.1875 (4.77)	.040 (1.02)	.083 (2.11)	MS27488-20-2	Red
16 Fiber Optic*	-	MIL-T-29504/11	-	-	-	-	-	-	-	-
12 Coax*	-	Contact us	-	-	-	-	-	-	-	-

All dimensions in inches (millimeters in parenthesis) * Special – contact us for information.

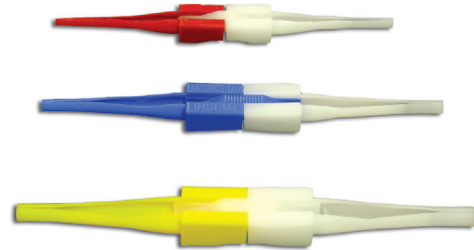
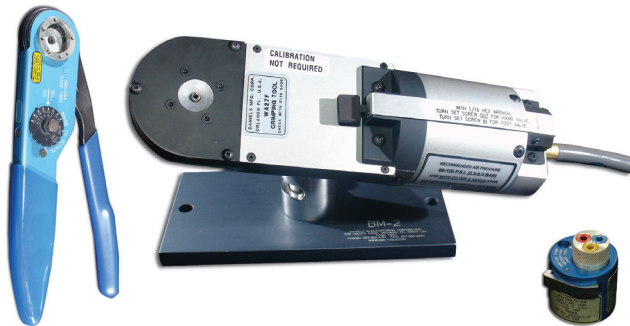
PINS



CONTACT SIZE	HAND-CRIMP TOOL	POWER-CRIMP TOOL	TURRET HEADS	USE LOCATOR COLOR	METAL		PLASTIC		
					INSERTION TOOL	EXTRACTION TOOL	INSERTION/ EXTRACTION TOOL	INSERTION TIP COLOR	EXTRACTION TIP COLOR
20	M22520/1-01	WA27FH	M22520/1-02	Red	DAK83-20B	DRK83-20B	M81969/14-11	Red	White
16	M22520/1-01	WA27FH	M22520/1-02	Blue	DAK83-16B	DRK83-16B	M81969/14-03	Blue	White
12	M22520/1-01	WA27FH	M22520/1-02	Yellow	DAK83-12B	DRK83-12B	M81969/14-04	Yellow	White
20 Alumel*	M22520/1-01	WA27FH	M22520/1-02	Red	DAK83-20B	DAK83-20B	M81969/14-11	Red	White
20 Chromel*	M22520/1-01	WA27FH	M22520/1-02	Red	DAK83-20B	DAK83-20B	M81969/14-11	Red	White
16 Fiber Optic*	-	-	-	-	-	-	-	-	-
12 Coax*	-	-	-	-	-	-	-	-	-

†† Contact us for more tool accessories.

SOCKETS

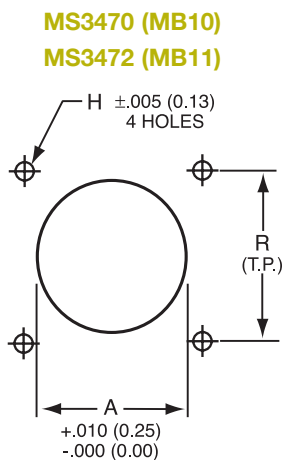


CONTACT SIZE	HAND-CRIMP TOOL	POWER-CRIMP TOOL	TURRET HEADS	USE LOCATOR COLOR	METAL		PLASTIC		
					INSERTION TOOL	EXTRACTION TOOL	INSERTION/ EXTRACTION TOOL	INSERTION TIP COLOR	EXTRACTION TIP COLOR
20	M22520/1-01	WA27FH	M22520/1-02	Red	DAK83-20B	DRK83-20B	M81969/14-11	Red	White
16	M22520/1-01	WA27FH	M22520/1-02	Blue	DAK83-16B	DRK83-16B	M81969/14-03	Blue	White
12	M22520/1-01	WA27FH	M22520/1-02	Yellow	DAK83-12B	DRK83-12B	M81969/14-04	Yellow	White
20 Alumel*	M22520/1-01	WA27FH	M22520/1-02	Red	DAK83-20B	DAK83-20B	M81969/14-11	Red	White
20 Chromel*	M22520/1-01	WA27FH	M22520/1-02	Red	DAK83-20B	DAK83-20B	M81969/14-11	Red	White
16 Fiber Optic*	-	-	-	-	-	-	-	-	-
12 Coax*	-	-	-	-	-	-	-	-	-

†† Contact us for more tool accessories.

All dimensions in inches (millimeters in parenthesis)

MB FLANGED PANEL CUTOUTS

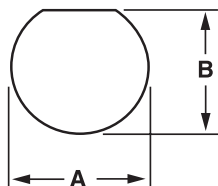


SHELL SIZE	MS3470/MB10 NARROW FLANGE				MS3472/MB11 WIDE FLANGE		
	A DIAMETER	R	SCREW H	SIZE	R	SCREW H	SIZE
8	.620 (15.7)	.594 (15.0)	.125 (3.1)	#4	.734 (18.6)	.155 (3.9)	#6
10	.740 (18.8)	.719 (18.2)	.125 (3.1)	#4	.812 (20.6)	.155 (3.97)	#6
12	.864 (21.9)	.812 (20.6)	.125 (3.1)	#4	.938 (23.9)	.155 (3.97)	#6
14	.990 (25.1)	.906 (23.0)	.125 (3.1)	#4	1.031 (26.1)	.155 (3.97)	#6
16	1.118 (28.4)	.969 (24.6)	.125 (3.1)	#4	1.125 (28.5)	.155 (3.97)	#6
18	1.240 (31.5)	1.062 (26.9)	.125 (3.1)	#4	1.203 (30.5)	.155 (3.97)	#6
20	1.366 (34.7)	1.156 (29.3)	.125 (3.1)	#4	1.297 (32.9)	.155 (3.97)	#6
22	1.490 (37.8)	1.250 (31.7)	.125 (3.1)	#4	1.375 (34.9)	.155 (3.97)	#6
24	1.616 (41.0)	1.375 (34.9)	.155 (3.9)	#6	1.500 (38.1)	.155 (3.97)	#6

➔ See page 143 for MS3470/MB10 gaskets.
 ➔ See page 490 for nut plates and seal screws.

JAM NUT PANEL CUTOUTS

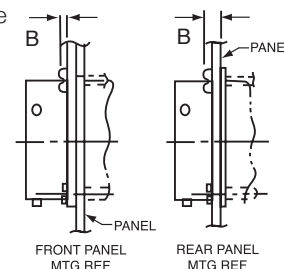
MS3474 (MB14)



SHELL SIZE	A DIAMETER ±.005 (±0.13)	B ±.005 (±0.13)
8	.572 (15.5)	.536 (13.6)
10	.697 (17.7)	.661 (16.7)
12	.895 (22.7)	.824 (20.9)
14	1.010 (25.6)	.948 (24.0)
16	1.135 (28.3)	1.072 (27.2)
18	1.260 (32.0)	1.197 (30.4)
20	1.385 (35.1)	1.322 (33.5)
22	1.510 (38.3)	1.447 (36.7)
24	1.635 (41.5)	1.572 (39.9)

PANEL THICKNESS

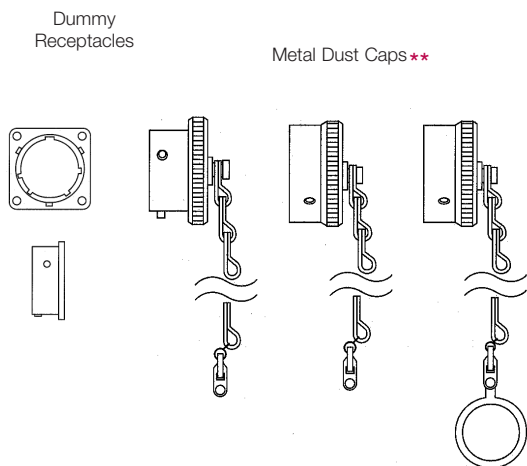
MS3470 (MB10) Narrow Flange
 MS3472 (MB11) Wide Flange



SHELL SIZE	NARROW FLANGE MS3470/MB10	WIDE FLANGE MS3472/MB11
	*B MAX	
8		
10	.087	.118
12	(2.2)	(3.0)
14		
16		
18		
20		
22	.212	.212
24	(5.3)	(5.3)

* (Screw head front-mount or panel thickness plus screw head rear-mount)

DUMMY RECEPTACLES & METAL DUST CAPS



SHELL SIZE CHAIN	DUMMY RECEPTACLE	FOR PLUG	METAL DUST CAPS	
			FOR RECEPTACLE	
			FLANGED** WITH SASH CHAIN PART NUMBER	JAM NUT** WITH SASH AND RING
8	MS3115-8	MS3180-8CA	MS3181-8CA	MS3181-8NA
10	MS3115-10	MS3180-10CA	MS3181-10CA	MS3181-10NA
12	MS3115-12	MS3180-12CA	MS3181-12CA	MS3181-12NA
14	MS3115-14	MS3180-14CA	MS3181-14CA	MS3181-14NA
16	MS3115-16	MS3180-16CA	MS3181-16CA	MS3181-16NA
18	MS3115-18	MS3180-18CA	MS3181-18CA	MS3181-18NA
20	MS3115-20	MS3180-20CA	MS3181-20CA	MS3181-20NA
22	MS3115-22	MS3180-22CA	MS3181-22CA	MS3181-22NA
24	MS3115-24	MS3180-24CA	MS3181-24CA	MS3181-24NA

** Sash chain for mounting screw on flanged receptacles.
 Sash chain with ring for mounting to jam nut receptacle.
 Dust caps are anodized-plated.

All dimensions in inches (millimeters in parenthesis)