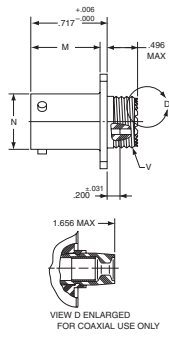
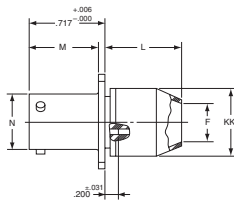


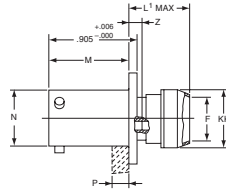
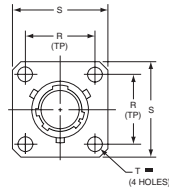
RECEPTACLES

LJT00RP
(MS27466P)

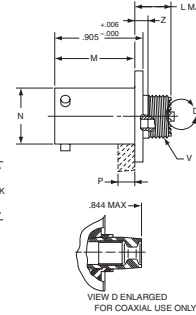


VIEW D ENLARGED FOR COAXIAL USE ONLY

LJT00RE (MS27466E)
LJT00RT (MS27466T) HE30800T

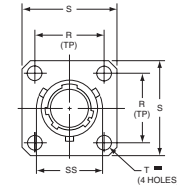


LJTPQ00RP
(MS27656P)



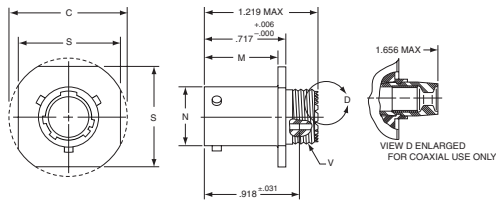
VIEW D ENLARGED FOR COAXIAL USE ONLY

LJTPQ00RE (MS27656E)
LJTPQ00RT (MS27656T)



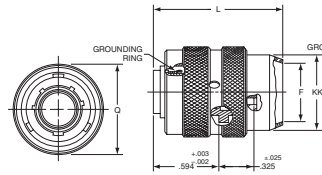
SHELL SIZE	F ±.010	L MAX.		L ¹ MAX.	M +.000 / -.005		N DIA. +.001 / -.005	R (TP)	S DIMENSION		T DIA. ±.005 (±127)	KK DIMENSION MAX.		V THREAD CLASS 2A (PLATED)	Z MAX.	SS DIA.
		MS27466/LJT00R	MS27656/LJTPQ00R	MS27656/LJTPQ00R	MS27466/LJT00R	MS27656/LJTPQ00R			MS27466/LJT00R ±.016	MS27656/LJTPQ00R +.011/-010		MS27466/LJT00R	MS27656/LJTPQ00R			
9	0.444 (11.3)	0.813 (20.7)	0.453 (11.5)	0.641 (16.3)	0.632 (16.1)	0.820 (20.8)	0.572 (14.5)	0.719 (18.3)	0.938 (23.8)	0.938 (23.8)	0.128 (3.3)	0.608 (15.4)	0.625 (15.9)	.4375-28 UNEF (3.5)	0.138 (3.5)	0.662 (16.8)
11	0.558 (14.2)	0.813 (20.7)	0.453 (11.5)	0.641 (16.3)	0.632 (16.1)	0.820 (20.8)	0.700 (17.8)	0.812 (20.6)	1.031 (26.2)	1.031 (26.2)	0.128 (3.3)	0.734 (18.6)	0.750 (19.1)	.5625-24 UNEF (3.5)	0.138 (3.5)	0.810 (20.6)
13	0.683 (17.3)	0.813 (20.7)	0.453 (11.5)	0.641 (16.3)	0.632 (16.1)	0.820 (20.8)	0.850 (21.6)	0.906 (23.0)	1.125 (28.6)	1.125 (28.6)	0.128 (3.3)	0.858 (21.8)	0.875 (22.2)	.6875-24 UNEF (3.5)	0.138 (3.5)	0.960 (24.4)
15	0.808 (20.5)	0.813 (20.7)	0.453 (11.5)	0.641 (16.3)	0.632 (16.1)	0.820 (20.8)	0.975 (24.8)	0.969 (24.6)	1.219 (31.0)	1.219 (31.0)	0.128 (3.3)	0.984 (25.0)	1.000 (25.4)	.8125-20 UNEF (3.5)	0.138 (3.5)	1.085 (27.6)
17	0.909 (23.1)	0.813 (20.7)	0.453 (11.5)	0.641 (16.3)	0.632 (16.1)	0.820 (20.8)	1.100 (27.9)	1.062 (27.0)	1.312 (33.3)	1.312 (33.3)	0.128 (3.3)	1.110 (28.2)	1.125 (28.6)	.9375-20 UNEF (3.5)	0.138 (3.5)	1.210 (30.7)
19	1.034 (26.3)	0.813 (20.7)	0.453 (11.5)	0.641 (16.3)	0.632 (16.1)	0.820 (20.8)	1.207 (30.7)	1.156 (29.4)	1.438 (36.5)	1.438 (36.5)	0.128 (3.3)	1.234 (31.3)	1.250 (31.8)	1.0625-18 UNEF (3.5)	0.138 (3.5)	1.317 (33.5)
21	1.159 (29.4)	0.906 (23.0)	0.484 (12.3)	0.672 (17.1)	0.602 (15.3)	0.790 (20.1)	1.332 (33.8)	1.250 (31.8)	1.562 (39.7)	1.562 (39.7)	0.128 (3.3)	1.360 (34.5)	1.375 (34.9)	1.1875-18 UNEF (4.3)	0.168 (4.3)	1.442 (36.6)
23	1.284 (32.6)	0.906 (23.0)	0.484 (12.3)	0.672 (17.1)	0.602 (15.3)	0.790 (20.1)	1.457 (37.0)	1.375 (34.9)	1.688 (42.9)	1.688 (42.9)	0.147 (3.7)	1.484 (37.7)	1.500 (38.1)	1.3125-18 UNEF (4.3)	0.168 (4.3)	1.567 (39.8)
25	1.409 (35.8)	0.906 (23.0)	0.484 (12.3)	0.672 (17.1)	0.602 (15.3)	0.790 (20.1)	1.582 (40.2)	1.500 (38.1)	1.812 (46.0)	1.812 (46.0)	0.147 (3.7)	1.610 (40.9)	1.625 (41.3)	1.4375-18 UNEF (4.3)	0.168 (4.3)	1.692 (43.0)

LJT01RE/LJT01RT/HE30801T



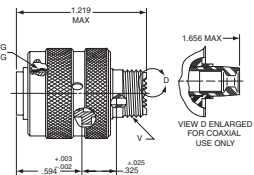
VIEW D ENLARGED FOR COAXIAL USE ONLY

LJT06RP (MS27467P)



LJT06RE (MS27467E)

LJT06RT (MS27467T) HE30806T



VIEW D ENLARGED FOR COAXIAL USE ONLY

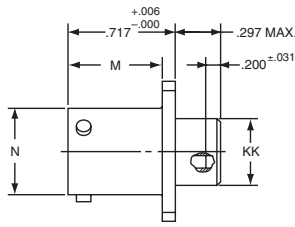
SHELL SIZE	C MAX.	M +.000/-005 (+.000/-127)	N +.000/-005 (+.000/-127)	S ±.016 (±.406)	V THREAD CLASS 2A (PLATED)
9	1.094 (27.8)	0.632 (16.1)	0.572 (14.5)	0.938 (23.8)	.4375-28 UNEF
11	1.188 (30.2)	0.632 (16.1)	0.700 (17.8)	1.031 (26.2)	.5625-24 UNEF
13	1.281 (32.5)	0.632 (16.1)	0.850 (21.6)	1.125 (28.6)	.6875-24 UNEF
15	1.375 (34.9)	0.632 (16.1)	0.975 (24.8)	1.219 (31.0)	.8125-20 UNEF
17	1.469 (37.3)	0.632 (16.1)	1.100 (27.9)	1.312 (33.3)	.9375-20 UNEF
19	1.594 (40.5)	0.632 (16.1)	1.207 (30.7)	1.438 (36.5)	1.0625-18 UNEF
21	1.719 (43.7)	0.602 (15.3)	1.332 (33.8)	1.562 (39.7)	1.1875-18 UNEF
23	1.844 (46.8)	0.602 (15.3)	1.457 (37.0)	1.688 (42.9)	1.3125-18 UNEF
25	1.969 (50.0)	0.602 (15.3)	1.582 (40.2)	1.812 (46.0)	1.4375-18 UNEF

SHELL SIZE	F ±.010	L MAX.	Q MAX.	KK DIAMETER MAX.	V THREAD CLASS 2A (PLATED)
9	0.444 (11.3)	1.531 (38.9)	0.844 (21.4)	0.608 (15.4)	.4375-28 UNEF
11	0.558 (14.2)	1.531 (38.9)	0.969 (24.6)	0.734 (18.6)	.5625-24 UNEF
13	0.683 (17.3)	1.531 (38.9)	1.141 (29.0)	0.858 (21.8)	.6875-24 UNEF
15	0.808 (20.5)	1.531 (38.9)	1.266 (32.2)	0.984 (25.0)	.8125-20 UNEF
17	0.909 (23.1)	1.531 (38.9)	1.391 (35.3)	1.110 (28.2)	.9375-20 UNEF
19	1.034 (26.3)	1.531 (38.9)	1.500 (38.1)	1.234 (31.3)	1.0625-18 UNEF
21	1.159 (29.4)	1.625 (41.3)	1.625 (41.3)	1.360 (34.5)	1.1875-18 UNEF
23	1.284 (32.6)	1.625 (41.3)	1.750 (44.5)	1.484 (37.7)	1.3125-18 UNEF
25	1.409 (35.8)	1.625 (41.3)	1.875 (47.6)	1.610 (40.9)	1.4375-18 UNEF

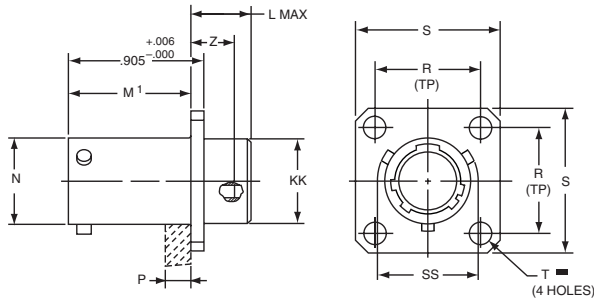
All dimensions in inches (millimeters in parenthesis)

RECEPTACLES

LJT02RE (MS27496E)

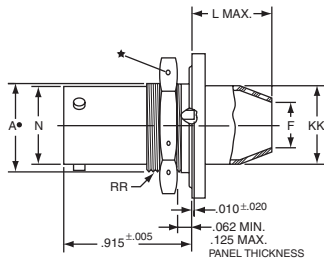
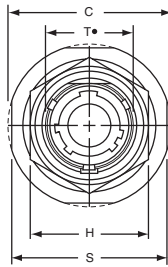


LJTP02RE (MS27505E)



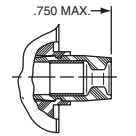
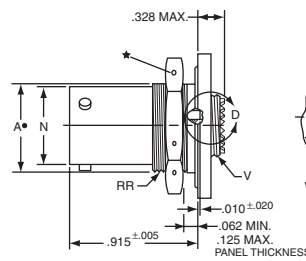
SHELL SIZE	L MAX.	M +.000/-0.005 (+.000/-127)	M1 +.001/-0.005 (+.000/-127)	N DIAMETER +.001/-0.005 (+.025/-127)	P MAX. PANEL THICKNESS	R (TP)	S +.011/-0.010 (+.279/-254)	T DIAMETER ±0.005 (±127)	Z ±0.031 (±787)	KK DIAMETER +.006/-0.005 (+.152/-127)	SS DIAMETER +.000/-0.016 (+.000/-406)
9	0.203 (5.2)	0.632 (16.1)	0.820 (20.8)	0.572 (14.5)	0.234 (5.9)	0.719 (18.3)	0.938 (23.8)	0.128 (3.3)	0.107 (2.7)	0.433 (11.0)	0.662 (16.8)
11	0.203 (5.2)	0.632 (16.1)	0.820 (20.8)	0.700 (17.8)	0.234 (5.9)	0.812 (20.6)	1.031 (26.2)	0.128 (3.3)	0.107 (2.7)	0.557 (14.1)	0.810 (20.6)
13	0.203 (5.2)	0.632 (16.1)	0.820 (20.8)	0.850 (21.6)	0.234 (5.9)	0.906 (23.0)	1.125 (28.6)	0.128 (3.3)	0.107 (2.7)	0.676 (17.2)	0.960 (24.4)
15	0.203 (5.2)	0.632 (16.1)	0.820 (20.8)	0.975 (24.8)	0.234 (5.9)	0.969 (24.6)	1.219 (31.0)	0.128 (3.3)	0.107 (2.7)	0.801 (20.3)	1.085 (27.6)
17	0.203 (5.2)	0.632 (16.1)	0.820 (20.8)	1.100 (27.9)	0.234 (5.9)	1.062 (27.0)	1.312 (33.3)	0.128 (3.3)	0.107 (2.7)	0.926 (23.5)	1.210 (30.7)
19	0.203 (5.2)	0.632 (16.1)	0.820 (20.8)	1.207 (30.7)	0.234 (5.9)	1.156 (29.4)	1.438 (36.5)	0.128 (3.3)	0.107 (2.7)	1.032 (26.2)	1.317 (33.5)
21	0.234 (5.9)	0.602 (15.3)	0.790 (20.1)	1.332 (33.8)	0.204 (5.2)	1.250 (31.8)	1.562 (39.7)	0.128 (3.3)	0.137 (3.5)	1.157 (29.4)	1.442 (36.6)
23	0.234 (5.9)	0.602 (15.3)	0.790 (20.1)	1.457 (37.0)	0.204 (5.2)	1.375 (34.9)	1.688 (42.9)	0.147 (3.7)	0.137 (3.5)	1.282 (32.6)	1.567 (39.8)
25	0.234 (5.9)	0.602 (15.3)	0.790 (20.1)	1.582 (40.2)	0.193 (4.9)	1.500 (38.1)	1.812 (46.0)	0.147 (3.7)	0.137 (3.5)	1.407 (35.7)	1.692 (43.0)

LJT07RP (MS27468P)



LJT07RE (MS27468E)

LJT07RT (MS27468T) HE30807T



SHELL SIZE	A* +.000/-0.010 (+.000/-254)	C MAX.	F ±.010	H HEX. +.017/-0.016 (+.432/-406)	L MAX.	N +.001/-0.005 (+.025/-127)	S ±0.016 (±406)	T* +.010/-0.000 (+.254/-000)	V THREAD CLASS 2A (PLATED)	KK DIAMETER MAX.	RR THREAD CLASS 2A (PLATED)
9	0.669 (17.0)	1.199 (30.5)	0.444 (11.3)	0.875 (22.2)	0.625 (15.9)	0.572 (14.5)	1.062 (27.0)	0.697 (17.7)	.4375-28 UNEF	0.608 (15.4)	.6875-24 UNEF
11	0.769 (19.5)	1.386 (35.2)	0.558 (14.2)	1.000 (25.4)	0.625 (15.9)	0.700 (17.8)	1.250 (31.8)	0.822 (20.9)	.5625-24 UNEF	0.734 (18.6)	.8125-20 UNEF
13	0.955 (24.3)	1.511 (38.4)	0.683 (17.3)	1.188 (30.2)	0.625 (15.9)	0.850 (21.6)	1.375 (34.9)	1.007 (25.6)	.6875-24 UNEF	0.858 (21.8)	1.0000-20 UNEF
15	1.084 (27.5)	1.636 (41.6)	0.808 (20.5)	1.312 (33.3)	0.625 (15.9)	0.975 (24.8)	1.500 (38.1)	1.134 (28.8)	.8125-20 UNEF	0.984 (25.0)	1.1250-18 UNEF
17	1.208 (30.7)	1.761 (44.7)	0.909 (23.1)	1.438 (36.5)	0.625 (15.9)	1.100 (27.9)	1.625 (41.3)	1.259 (32.0)	.9375-20 UNEF	1.110 (28.2)	1.2500-18 UNEF
19	1.333 (33.9)	1.949 (49.5)	1.034 (26.3)	1.562 (39.7)	0.656 (16.7)	1.207 (30.7)	1.812 (46.0)	1.384 (35.2)	1.0625-18 UNEF	1.234 (31.3)	1.3750-18 UNEF
21	1.459 (37.1)	2.073 (52.7)	1.159 (29.4)	1.688 (42.9)	0.750 (19.1)	1.332 (33.8)	1.938 (49.2)	1.507 (38.3)	1.1875-18 UNEF	1.360 (34.5)	1.5000-18 UNEF
23	1.580 (40.1)	2.199 (55.9)	1.284 (32.6)	1.812 (46.0)	0.750 (19.1)	1.457 (37.0)	2.062 (52.4)	1.634 (41.5)	1.3125-18 UNEF	1.484 (37.7)	1.6250-18 UNEF
25	1.709 (43.4)	2.323 (59.0)	1.409 (35.8)	2.000 (50.8)	0.750 (19.1)	1.582 (40.2)	2.188 (55.6)	1.759 (44.7)	1.4375-18 UNEF	1.610 (40.9)	1.7500-18 UNS

• "D" shaped mounting hole dimensions

All dimensions in inches (millimeters in parenthesis)