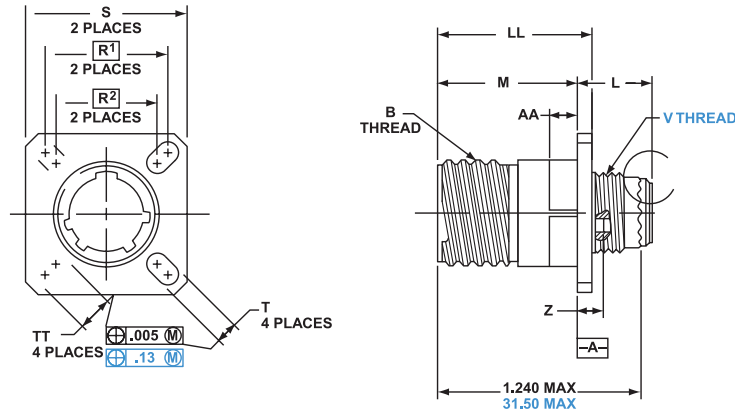


RECEPTACLE - WALL MOUNTING

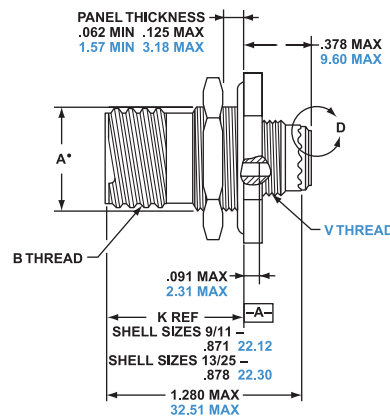
AL00



Shell Size	B Thread Class 2A 1.0P-0.3L -TS (Plated)	L Max.	M +.000/-0.005 (+.000/-0.13)	R1	R2	S Max.	T +.008/-0.006 (+.20/-0.13)	V Thread Metric	Z Max.	AA Max. Panel Thickness	LL +/-0.005 (+/-0.13)	TT +.008/-0.006 (+.20/-0.13)
9	.6250	.514 (13.06)	.775 (19.69)	.719 (18.26)	.594 (15.09)	.948 (24.10)	.128 (3.25)	M12X1-6g	.198 (5.03)	.234 (5.94)	.913 (23.19)	.216 (5.49)
11	.7500	.514 (13.06)	.775 (19.69)	.812 (20.62)	.719 (18.26)	1.043 (26.50)	.128 (3.25)	M15X1-6g	.198 (5.03)	.234 (5.94)	.913 (23.19)	.194 (4.93)
13	.8750	.514 (13.06)	.775 (19.69)	.906 (23.01)	.812 (20.62)	1.137 (28.90)	.128 (3.25)	M18X1-6g	.198 (5.03)	.234 (5.94)	.913 (23.19)	.194 (4.93)
15	1.0000	.514 (13.06)	.775 (19.69)	.969 (24.61)	.906 (23.01)	1.232 (31.30)	.128 (3.25)	M22X1-6g	.198 (5.03)	.234 (5.94)	.913 (23.19)	.173 (4.39)
17	1.1875	.514 (13.06)	.775 (19.69)	1.062 (26.97)	.969 (24.61)	1.323 (33.70)	.128 (3.25)	M25X1-6g	.198 (5.03)	.234 (5.94)	.913 (23.19)	.194 (4.93)
19	1.2500	.514 (13.06)	.775 (19.69)	1.156 (29.36)	1.062 (26.97)	1.449 (36.90)	.128 (3.25)	M28X1-6g	.198 (5.03)	.234 (5.94)	.913 (23.19)	.194 (4.93)
21	1.3750	.545 (13.84)	.745 (18.92)	1.250 (31.75)	1.156 (29.36)	1.575 (40.10)	.128 (3.25)	M31X1-6g	.228 (5.79)	.204 (5.18)	.911 (23.14)	.194 (4.93)
23	1.5000	.545 (13.84)	.745 (18.92)	1.375 (34.93)	1.250 (31.75)	1.701 (43.30)	.154 (3.91)	M34X1-6g	.228 (5.79)	.204 (5.18)	.911 (23.14)	.242 (6.15)
25	1.6250	.545 (13.84)	.745 (18.92)	1.500 (38.10)	1.375 (34.93)	1.823 (46.40)	.154 (3.91)	M37X1-6g	.228 (5.79)	.204 (5.18)	.911 (23.14)	.242 (6.15)

RECEPTACLE - JAM NUT

AL07

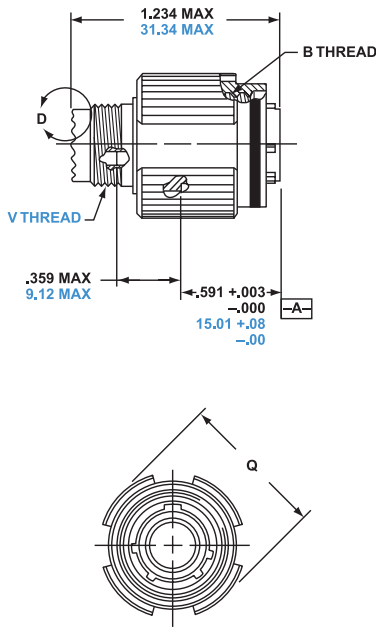


SHELL SIZE	A +.000/-0.010 (+.00/-0.25)	B THREAD CLASS 2A 0.1P-0.3L-TS (PLATED)	C MAX.	H HEX +.017/-0.016 (+.43/-0.41)	S +/- .010 (+/-0.25)	T +.010/-0.000 (+.25/-0.00)	V THREAD METRIC
9	.669 (16.99)	0.6250	1.199 (30.45)	0.875 (22.23)	1.062 (26.97)	0.697 (17.70)	M12X1-6g
11	0.769 (19.53)	0.7500	1.386 (35.20)	1.062 (27.00)	1.250 (31.75)	0.822 (20.88)	M15X1-6g
13	0.955 (24.26)	0.8750	1.511 (38.38)	1.250 (30.18)	1.375 (34.93)	1.007 (25.58)	M18X1-6g
15	1.084 (27.53)	1.0000	1.636 (41.55)	1.375 (33.32)	1.500 (38.10)	1.134 (28.80)	M22X1-6g
17	1.208 (30.68)	1.1875	1.761 (44.73)	1.438 (36.53)	1.625 (41.28)	1.259 (31.98)	M25X1-6g
19	1.333 (33.86)	1.2500	1.949 (49.50)	1.562 (39.67)	1.812 (46.02)	1.384 (35.15)	M28X1-6g
21	1.459 (37.06)	1.3750	2.073 (52.65)	1.688 (42.80)	1.938 (49.23)	1.507 (38.28)	M31X1-6g
23	1.575 (40.01)	1.5000	2.199 (55.85)	1.812 (46.02)	2.062 (52.37)	1.634 (41.50)	M34X1-6g
25	1.709 (43.41)	1.6250	2.323 (59.00)	2.000 (50.80)	2.188 (55.58)	1.759 (44.68)	M37X1-6g

All dimensions in inches (millimeters in parenthesis)

PLUG - STRAIGHT

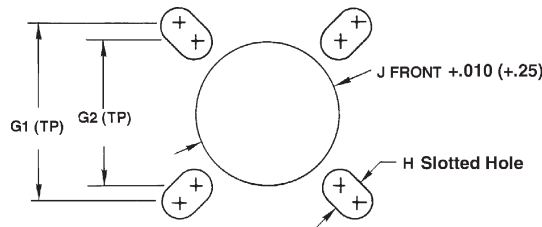
AL06



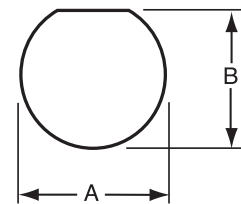
SHELL SIZE	B THREAD CLASS 2B 0.1P-0.3L-TS (PLATED)	Q DIAMETER MAX.	V THREAD METRIC
9	0.6250	.858 (21.8)	M12X1-6g
11	0.7500	.984 (25.0)	M15X1-6g
13	0.8750	1.157 (29.4)	M18X1-6g
15	1.0000	1.279 (32.5)	M22X1-6g
17	1.1875	1.405 (35.7)	M25X1-6g
19	1.2500	1.515 (38.5)	M28X1-6g
21	1.3750	1.641 (41.7)	M31X1-6g
23	1.5000	1.767 (44.9)	M34X1-6g
25	1.6250	1.889 (48.0)	M37X1-6g

PANEL CUTOUTS

WALL MOUNT RECEPTACLE



JAM NUT RECEPTACLE



Shell Size		D38999/20 & TV/CTV Wall Mount				
D38999	TV/CTV	G1	G2	H Diameter +.005 (+.130) -0.000 (.000)	Front Mount J Min.	Back Mount J Min.
A	9	.719 (18.26)	.59 (15.09)	.130 (3.25)	.516 (13.11)	.656 (16.66)
B	11	.81 (20.62)	.71 (18.26)	.130 (3.25)	.625 (15.88)	.796 (20.22)
C	13	.91 (23.01)	.81 (20.62)	.130 (3.25)	.750 (19.05)	.922 (23.42)
D	15	.97 (24.61)	.90 (23.01)	.130 (3.25)	.906 (23.01)	1.047 (26.59)
E	17	1.06 (26.97)	.96 (24.61)	.130 (3.25)	1.016 (25.81)	1.219 (30.96)
F	19	1.16 (29.36)	1.06 (26.97)	.130 (3.25)	1.141 (28.98)	1.297 (32.94)
G	21	1.25 (31.75)	1.15 (29.36)	.130 (3.25)	1.266 (32.16)	1.422 (36.12)
H	23	1.38 (34.93)	1.25 (31.75)	.155 (3.94)	1.375 (34.93)	1.547 (34.93)
J	25	1.50 (38.10)	1.37 (34.93)	.155 (3.94)	1.484 (37.69)	1.672 (42.47)

D38999/24 & TV/CTV Jam Nut	
A +.010 (+.025) -0.000 (.000)	B +.000 (000) -0.010 (-.025)
.693 (17.60)	.657 (16.70)
.825 (20.96)	.770 (19.59)
1.010 (25.65)	.955 (24.26)
1.135 (28.83)	1.085 (27.56)
1.260 (32.01)	1.210 (30.73)
1.385 (35.18)	1.335 (33.91)
1.510 (38.35)	1.460 (37.08)
1.635 (41.53)	1.585 (40.29)
1.760 (44.70)	1.710 (43.43)

All dimensions in inches (millimeters in parenthesis)

PANEL THICKNESS

AL00 - WALL MOUNT RECEPTACLE

Rear Mount .125" (3.18) Max

AL07 - JAM NUT RECEPTACLE

.125" (3.18) Max/.062" (1.57) Min

All dimensions in inches (millimeters in parenthesis)