

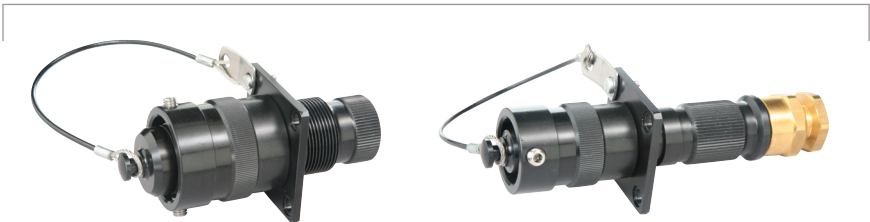
CREATE YOUR PART NUMBER

	1	2	3	4	5	6	7	
	<b>EXM-</b>	<b>A</b>	<b>06-</b>	<b>9-35</b>	<b>P</b>	<b>A1</b>	<b>-01</b>	<b>-BS</b>
<b>PREFIX</b>	<b>MATERIAL</b>	<b>SHELL STYLE</b>	<b>LAYOUT</b>	<b>CONTACT</b>	<b>CABLE GLAND</b>	<b>POLARIZATION</b> (OMIT FOR NORMAL)	<b>MODIFIER</b> CONTACT US FOR DETAILS	

**STEP 1: SELECT MATERIAL**



**STEP 2: SELECT SHELL STYLE, PLUG OR RECEPTACLE**



**02**  
Panel Mount Receptacle  
(Cable glands not available)

**01**  
In-Line Receptacle



**06**  
Cable Plug

### STEP 3: SELECT LAYOUT

For listing by # of contacts, → see pages 290-291.

INSERT ARRANGEMENT NUMBER	SERVICE RATING	TOTAL NUMBER OF CONTACTS	22D	20	16	12	8
9-35	M	6	6				
9-94	M	2		2			
9-98	I	3		3			
11-2	I	2			2		
11-5	I	5		5			
11-35	M	13	13				
11-98	I	6		6			
11-99	I	7		7			
13-4	I	4			4		
13-8	I	8		8			
13-13	I, Fibre Optic	4			2	2	
13-35	M	22	22				
13-98	I	10		10			
15-5	II	5			5		
15-15	I	15		14	1		
15-18	I	18		18			
15-19	I	19		19			
15-35	M	37	37				
15-97	I	12		8	4		
15-AC	M	26	24		2*		
17-2	M	39	38				1**
17-6	I	6				6	
17-8	II	8			8		
17-22	Coax	4				2	2*
17-26	I	26		26			
17-31	I	19	4	11	4*		
17-35	M	55	55				
17-99	I	23		21	2		
19-11	II	11			11		
19-31	M	15	12			1	2*
19-32	I	32		32			
19-35	M	66	66				
19-RJ	RJ45						
21-11	I	11				11	
21-16	II	16			16		
21-35	M	79	79				
21-39	I	39		37	2		
21-41	I	41		41			
21-75	M	4					4*

\* COAX \*\* TWINAX

### STEP 4: SELECT CONTACT

P = Pin S = Socket

All dimensions in inches (millimeters in parenthesis)

### STEP 5: SELECT GLAND SIZE

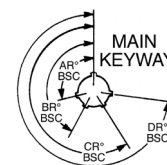
Leave blank for 02 Shell Style or no gland required

Shell Size	EEx d Cable MAX Gland Size Code	Unarmored Cable No Modification Needed		Armored & Sheathed Cable -BS	
		Min.	Max.	Min.	Max.
9/11	A1	.1575 (4.0)	.3307 (8.4)	.3543 (9.0)	.5315 (13.5)
13	A	.3780 (9.6)	.5512 (14.0)	.6102 (15.5)	.8307 (21.1)
15/17	B	.5315 (13.5)	.7874 (20.0)	.7992 (20.3)	1.079 (27.4)
19/21	C	.7677 (19.5)	1.035 (26.3)	1.051 (26.7)	1.339 (34.0)

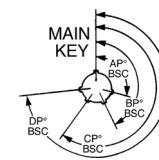
### STEP 6: SELECT POLARIZATION

- N = Normal Standard
- 01 = Highly-Popular
- 02 = Check for Availability
- 03 = Check for Availability
- 04 = Check for Availability

A plug with a given polarization letter will mate with a receptacle with the same polarization letter. The angles for a given connector are the same whether it contains pins or sockets. Inserts are not rotated in conjunction with the master keyway.



Receptacle Front face shown.



Plug Front face shown.

Shell Size	Key & Keyway Arrangement Identification	ARo or BRo or CRo or DRo or APo BPo CPo DPo BSC BSC BSC BSC			
		APo BSC	BPo BSC	CPo BSC	DPo BSC
9 & 11	N		141	208	236
	01		156	182	292
	02	95	145	195	252
	03		156	220	255
	04		146	234	298
13 & 15	05		141	184	242
	N		142	196	293
	01	80	170	200	310
	02		169	200	244
	03		140	200	257
17, 19, 21	04		145	176	280
	05		153	180	272
	N		142	196	273
	01	80	170	200	310
	02		169	200	244
	03		140	200	257
	04		145	180	280
	05		153	197	272

### STEP 7: SELECT MODIFIER

- FO = Size 16 fibre optic termini
  - BS = Armored Cable & Sheathed Cable
- Other sizes available. Contact us for details.

LAYOUT BY NUMBER OF CONTACTS

View of Mating-Face of Pin Insert



CONTACTS	1	2	3	4	
LAYOUT					
# OF CONTACTS	9-94	11-2	9-98	13-4	13-13
SERVICE RATING	2-#20 M	2-#16 I	3-#20 I	4-#16 I	2-#16, 2-#12 I, FIBER OPTIC
					17-22 2-#12, 2-#8 COAX
CONTACTS	4	5		6	
LAYOUT					
# OF CONTACTS	21-75	11-5	15-5	9-35	11-98
SERVICE RATING	4-#8 M	5-#20 I	5-#16 II	6-#22D M	6-#20 I
					17-6 6-#12 I
CONTACTS	7	8	10	11	
LAYOUT					
# OF CONTACTS	11-99	13-8	17-8	13-98	19-11
SERVICE RATING	7-#20 I	8-#20 I	8-#16 II	10-#20 I	11-#16 II
					21-11 11-#12 I
CONTACTS	12	13	15	16	18
LAYOUT					
# OF CONTACTS	15-97	11-35	15-15	19-31	21-16
SERVICE RATING	8-#20, 4-#16 I	13-#22D M	14-#20, 1-#16 I	12-#22D, 1-#12, 2-#8 M	16-#16 II
					15-18 18-#20 I
CONTACTS	19	22	22	26	32
LAYOUT					
# OF CONTACTS	15-19	13-35	17-99	15-AC	17-26
SERVICE RATING	19-#20 I	22-#22D M	21-#20, 2-#16 I	24-#22, 2-#16 M	26-#20 I
					19-32 32-#20 I

# LAYOUT BY NUMBER OF CONTACTS

View of Mating-Face of Pin Insert



CONTACTS	37	39	41	55
LAYOUT				
# OF CONTACTS	15-35	17-2	21-39	17-35
SERVICE RATING	37-#22D M	38-#22D, 1-#8 M	37-#20, 2-#16 I	55-#22D M
CONTACTS	66	79		
LAYOUT				
# OF CONTACTS	19-35	21-35		
SERVICE RATING	66-#22D M	79-#22D M		