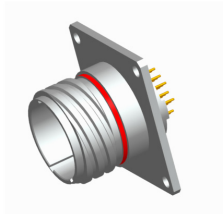


1	2	3	4	5	6
2M805-005-07	NF	8-13	P	A	-501
SHELL STYLE	PLATING	SHELL SIZE-LAYOUT	CONTACT TYPE	KEYING	MODIFIER

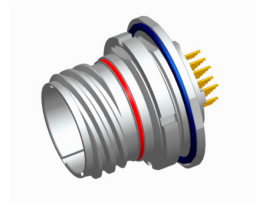
STEP 1: SELECT SHELL STYLE, PLUG OR RECEPTACLE

RECEPTACLES



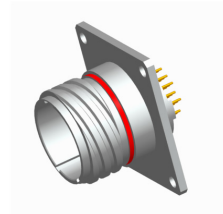
2M805-005-02

Square Flange with Solder Cup or PCB Termination with Standard Epoxy Potting



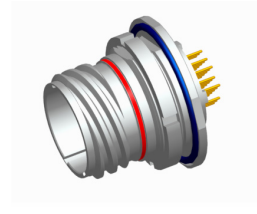
2M805-005-07*

Jam Nut with Solder Cup or PCB Termination with Epoxy Potting



2M805-017-02

Square Flange with Solder Cup or PCB Termination with Special Sealing for Open Face (unmated) Water Immersion Requirements. 100% Leak Tested. To maintain a helium leak rate of 1x10⁻⁴ cc/sec. pressure differential from -65°C to 150°C.



2M805-017-07*

Jam nut with Solder Cup or PCB Termination with Special Sealing for Open Face (unmated) Water Immersion Requirements. 100% Leak Tested. To maintain a helium leak rate of 1x10⁻⁴ cc/sec. pressure differential from -65°C to 150°C.

*add "-501" to the suffix of Jam Nut version to include a Hex Nut instead of a Spanner Nut. See Step 6.

STEP 2: SELECT CLASS



C = Aluminum/ Black Anodize (Non-Conductive) (RoHS)
M = Aluminum/ Electroless Nickel (RoHS)
NF = Aluminum/ Cadmium with Olive Drab Chromate
MT = Aluminum/ Nickel-PTFE(Durmalon) (RoHS)

Z1 = Stainless Steel/ Passivated
ZM = Stainless Steel/ Electroless Nickel (RoHS)
ZN = Aluminum/ Zinc-Nickel with Olive Drab Chromate
ZNU = Aluminum/ Zinc-Nickel with Black Chromate (RoHS)

STEP 3: SELECT LAYOUT

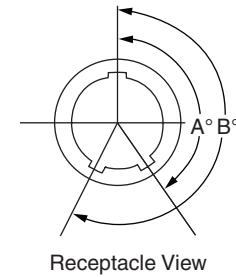
LAYOUT	# OF CONTACTS	CONTACT SIZE				
		23	20	20HD	16	12
8-1	1				1	
8-4	4	4				
8-6	6	6				
8-7	7	7				
8-23	3			3		
9-1	1					1
9-10	10	10				
9-25	5			5		
10-2	2				2	
10-13	13	13				
10-28	8			8		
10-200	6	4	2			
11-4	4				4	
11-19	19	19				
11-200	6	4			2	
11-201	10	8	2			
11-210	10			10		
12-2	2					2
12-5	5				5	
12-26	26	26				
12-200	13	12				1
12-201	6	4				2
12-202	10	8			2	
15-2	2					2
15-3	3					3
15-7	7				7	
15-37	37	37				
15-200	8	6				2
15-201	12	10				2
15-220	20			20		
18-5	5					5
18-12	12				12	
18-55	55	55				
18-235	35			35		
19-7	7					7
19-14	14				14	
19-85	85	85				
19-241	41			41		
23-12	12					12
23-22	22				22	
23-130	130	130				
23-269	69			69		

STEP 4: SELECT CONTACT

- P** = Pin - PCB
- S** = Socket - PCB
- E** = Pin - Solder Cup
- F** = Socket - Solder Cup

STEP 5: SELECT KEYING

	A KEYWAY DEGREE	B KEYWAY DEGREE
A	150	210
B	75	210
C	95	230
D	140	275



STEP 6: SELECT MODIFIER*

- Blank** = Default spanner nut supplied
- 501** = Hex nut supplied

*For Jam nut type only