

1	2	3	4	5	6
<b>2M804-005-07</b>	<b>NF</b>	<b>8-13</b>	<b>P</b>	<b>A</b>	<b>-501</b>
SHELL STYLE	PLATING	SHELL SIZE-LAYOUT	CONTACT TYPE	KEYING	MODIFIER

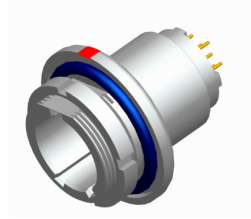
## STEP 1: SELECT SHELL STYLE, PLUG OR RECEPTACLE

### RECEPTACLES



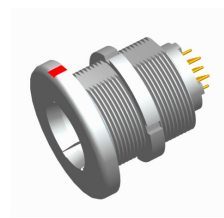
#### 2M804-005-02

Front Mount Jam Nut for Solder Cup or PCB Termination with Standard Epoxy Potting



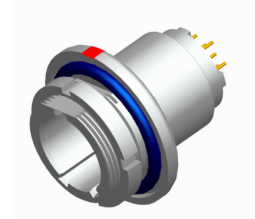
#### 2M804-005-07\*

Rear Mount Jam nut for Jam Nut with Solder Cup or PCB Termination with Epoxy Potting



#### 2M804-020-02

Front Mount Jam Nut for Solder Cup or PCB Termination with Special Sealing for Open Face (unmated) Water Immersion Requirements. 100% Leak Tested. To maintain a helium leak rate of  $1 \times 10^{-4}$  cc/sec. pressure differential from  $-65^{\circ}\text{C}$  to  $150^{\circ}\text{C}$ .



#### 2M804-020-07\*

Rear Mount Jam nut for Solder Cup or PCB Termination with Special Sealing for Open Face (unmated) Water Immersion Requirements. 100% Leak Tested. To maintain a helium leak rate of  $1 \times 10^{-4}$  cc/sec. pressure differential from  $-65^{\circ}\text{C}$  to  $150^{\circ}\text{C}$ .

\*add "-501" to the suffix of Jam Nut version to include a Hex Nut instead of a Spanner Nut. See Step 6.

## STEP 2: SELECT CLASS



**C** = Aluminum/ Black Anodize (Non-Conductive) (RoHS)  
**M** = Aluminum/ Electroless Nickel (RoHS)  
**NF** = Aluminum/ Cadmium with Olive Drab Chromate  
**MT** = Aluminum/ Nickel-PTFE(Durmalon) (RoHS)

**Z1** = Stainless Steel/ Passivated  
**ZM** = Stainless Steel/ Electroless Nickel (RoHS)  
**ZN** = Aluminum/ Zinc-Nickel with Olive Drab Chromate  
**ZNU** = Aluminum/ Zinc-Nickel with Black Chromate (RoHS)

**STEP 3: SELECT LAYOUT**

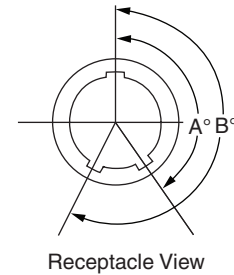
LAYOUT	# OF CONTACTS	CONTACT SIZE				
		23	20	20HD	16	12
5-3	3	3				
6-1	1				1	
6-4	4	4				
6-6	6	6				
6-7	7	7				
6-23	3			3		
7-1	1					1
7-10	10	10				
7-25	5			5		
8-2	2				2	
8-13	13	13				
8-28	8			8		
8-200	6	4	2			
9-4	4				4	
9-19	19	19				
9-200	6	4			2	
9-201	10	8	2			
9-210	10			10		
10-2	2					2
10-5	5				5	
10-26	26	26				
10-200	13	12				1
10-201	6	4				2
10-202	10	8			2	
12-2	2					2
12-3	3					3
12-7	7				7	
12-37	37	37				
12-200	8	6				2
12-201	12	10				2
12-220	20			20		
14-5	5					5
14-12	12				12	
14-55	55	55				
14-235	35			35		
15-7	7					7
15-14	14				14	
15-85	85	85				

**STEP 4: SELECT CONTACT**

- P** = Pin - PCB
- S** = Socket - PCB
- E** = Pin - Solder Cup
- F** = Socket - Solder Cup

**STEP 5: SELECT KEYING**

	A KEYWAY DEGREE	B KEYWAY DEGREE
N	150	210
X	75	210
Y	95	230
Z	140	275



**STEP 6: SELECT MODIFIER\***

- Blank** = Default spanner nut supplied
- 501** = Hex nut supplied

\*For Jam nut type only