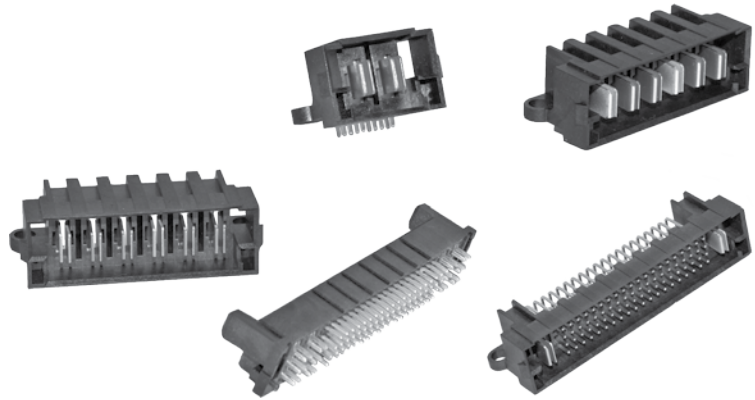


The PowerMod®PSX family of connectors is designed to offer low profile, high density, board to board blindmate connectors that provide either power contacts or power and signal contacts. The high performance power contacts and housings are rated up to 60 amps. The signal contacts are rated up to 1 amp. The power connector family is available in 2, 4, 6 and 8 contact configurations. The Power and Signal connector family offers housings that contain either 2 or 4 power contacts combined with either 24 or 80 signal contacts. Both the power and the power and signal product lines offer male and female connectors in vertical and right angle configurations.



Features

• Power & Power / Signal Connectors

Offers versatility for system designers. Combined Power and Signal versions eliminate the need for separate connectors.

• Compact Low Profile Design

Minimizes PCB board space requirements and allows for closer stacking of boards. Low profile facilitates improved airflow within the box.

• Blindmate Housings

Allows PCB boards connections in tough to reach applications.

SPECIFICATIONS

Materials		Mechanical	
Housing	LCP - Black	Power Contact Pitch (mm)	5
Contacts	Copper Alloy	(inches)	0.20
Plating		Signal Contact Pitch (mm)	2
- Power Contacts	Matte Tin	(inches)	0.08
- Signal Contacts (mating area)	10 micro-inches	Stack Height (mm)	14
- Signal Contacts (tail)	Au over Ni	(inches)	0.55
Blindmate Alignment		Creepage/Clearance Distance (mm)	2.8
- X Direction (mm)	1.8	(inches)	0.11
(inches)	0.07	Initial Contact Resistance	0.32 milli-ohm
- Y Direction (mm)	1.8	Contact Resistance (after 100 cycles)	0.37 milli-ohm
(inches)	0.07	Dielectric Withstand Voltage (AC)	2,200
Contact Wipe - in fully mated condition		Operating Temperature (°C)	-55° to 105°
(mm)	2.8	(°F)	-67° to 221°
(inches)	0.11	Max Processing Temperature	
Electrical		- For 60 seconds (°C)	230
Current Ratings (Amperes)		(°F)	446
- Power, CSA (30°C rise)	30	- For 20 seconds (°C)	260
- Power, UL1977	60	(°F)	500
- Signal, UL/CSA	1	Mating Cycle Life	200
Voltage Rating (AC/DC)	600	Mating/Unmating (average/power contact)	
		- Mating Force (lbf)	1.8
		(N)	8.0
		- Unmating Force (lbf)	1.5
		(N)	6.7

NOTE: PowerMod connectors are suitable for lead-free reflow soldering per temperature profile reference Jedec J-STD-020C.



HEADQUARTERS: Anderson Power Products®, 13 Pratts Junction Road, Sterling, MA 01564-2305 USA T:978-422-3600 F:978-422-0128

EUROPE: Anderson Power Products® Ltd., Unit 3, Europa Court, Europa Boulevard, Westbrook, Warrington, Cheshire, WA5 7TN United Kingdom T: +44 (0) 1925 428390 F: +44 (0) 1925 520203

ASIA / PACIFIC: IDEAL Anderson Asia Pacific Ltd., Unit 922-928 Topsail Plaza, 11 On Sum Street, Shatin N.T., Hong Kong T: +(852) 2636 0836 F: +(852) 2635 9036

CHINA: IDEAL Anderson Technologies (Shenzhen) Ltd., Block A8 Tantou Western Industrial Park, Songgang Baoan District, Shenzhen, P.R. China 518105 T: +(86) 755 2768 2118 F: +(86) 755 2768 2218

TAIWAN: IDEAL Anderson Asia Pacific Ltd., Taiwan Branch, 4F.-2, No.116, Dadun 20th St., Situn District, Taichung City 407, Taiwan (R.O.C.) T: +(886) 4 2310 6451 F: +(886) 4 2310 6460

ORDERING INFORMATION

0.062" PCB Thickness

Power Connectors (Tin Plated)		Power & Signal Connectors (Power Tin Plated, Signal Gold Plated)	
Part Number	Description	Part Number	Description
Female Vertical			
PF-02TV01-001	2 contacts	PSF-018001-TV01-001	2 power, 80 signal contacts
PF-04TV01-001	4 contacts	PSF-028002-TV01-001	4 power, 80 signal contacts
PF-06TV01-001	6 contacts	PSF-012401-TV01-001	2 power, 24 signal contacts
PF-08TV01-001	8 contacts	PSF-022402-TV01-001	4 power, 24 signal contacts
Female Right Angle			
PF-02TR01-002	2 contacts	PSF-018001-TR01-001	Contact Factory
PF-04TR01-002	4 contacts	PSF-028002-TR01-001	Contact Factory
PF-06TR01-002	6 contacts	PSF-012401-TR01-002	2 power, 24 signal contacts
PF-08TR01-002	8 contacts	PSF-022402-TR01-002	4 power, 24 signal contacts
Male Vertical			
PM-02TV01-001	2 contacts	PSM-018001-TV01-001	2 power, 80 signal contacts
PM-04TV01-001	4 contacts	PSM-028002-TV01-001	4 power, 80 signal contacts
PM-06TV01-001	6 contacts	PSM-012401-TV01-001	2 power, 24 signal contacts
PM-08TV01-001	8 contacts	PSM-022402-TV01-001	4 power, 24 signal contacts
Male Right Angle			
PM-02TR01-002	2 contacts	PSM-018001-TR01-002	2 power, 80 signal contacts
PM-04TR01-002	4 contacts	PSM-028002-TR01-002	4 power, 80 signal contacts
PM-06TR01-002	6 contacts	PSM-012401-TR01-002	2 power, 24 signal contacts
PM-08TR01-002	8 contacts	PSM-022402-TR01-002	4 power, 24 signal contacts

0.093" PCB Thickness

Power Connectors (Tin Plated)		Power & Signal Connectors (Power Tin Plated, Signal Gold Plated)	
Part Number	Description	Part Number	Description
Female Vertical			
PF-02TV02-001	2 contacts	PSF-018001-TV02-001	2 power, 80 signal contacts
PF-04TV02-001	4 contacts	PSF-028002-TV02-001	4 power, 80 signal contacts
PF-06TV02-001	6 contacts	PSF-012401-TV02-001	2 power, 24 signal contacts
PF-08TV02-001	8 contacts	PSF-022402-TV02-001	4 power, 24 signal contacts
Female Right Angle			
PF-02TR02-002	2 contacts	PSF-018001-TR02-001	Contact Factory
PF-04TR02-002	4 contacts	PSF-028002-TR02-001	Contact Factory
PF-06TR02-002	6 contacts	PSF-012401-TR02-002	2 power, 24 signal contacts
PF-08TR02-002	8 contacts	PSF-022402-TR02-002	4 power, 24 signal contacts
Male Vertical			
PM-02TV02-001	2 contacts	PSM-018001-TV02-001	2 power, 80 signal contacts
PM-04TV02-001	4 contacts	PSM-028002-TV02-001	4 power, 80 signal contacts
PM-06TV02-001	6 contacts	PSM-012401-TV02-001	2 power, 24 signal contacts
PM-08TV02-001	8 contacts	PSM-022402-TV02-001	4 power, 24 signal contacts
Male Right Angle			
PM-02TR02-002	2 contacts	PSM-018001-TR02-002	2 power, 80 signal contacts
PM-04TR02-002	4 contacts	PSM-028002-TR02-002	4 power, 80 signal contacts
PM-06TR02-002	6 contacts	PSM-012401-TR02-002	2 power, 24 signal contacts
PM-08TR02-002	8 contacts	PSM-022402-TR02-002	4 power, 24 signal contacts

NOTE: For other options not listed here, please contact factory for pricing and lead times

PART NUMBERING CHART

Power Only

P	X	-	X	X	X	X	X	X	X	-	X	X	X
M - Male			0	2							0	1	No Attachment
F - Female			0	4							0	2	* Screw Down
QTY of Contacts			0	6							0	3	Locking Clip
QTY of Contacts			0	8							0	-	No Latch
Plating - Gold	L												
Plating - Tin	T												
Configuration										0	1	Lead Lengths for 1.57 (.062) PCB	
Configuration										R	0	2	Lead Lengths for 2.36 (.093) PCB
Configuration										V			

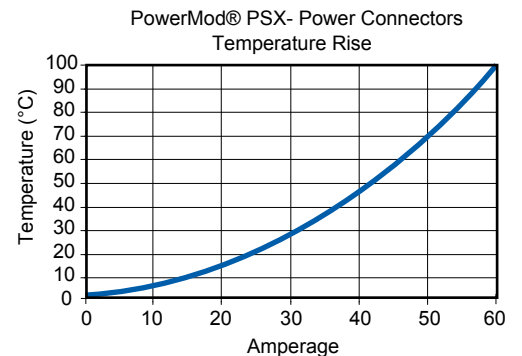
* Screw down only available on right angle

Power & Signal

P	S	X	-	X	X	X	X	X	X	-	X	X	X	-	X	X	X	
M - Male															0	1	No attachment	
F - Female															0	2	* Screw Down	
QTY of Power Contacts			0	1											0	3	Locking Clip	
QTY of Power Contacts			0	2											0	-	No Latch	
QTY of Signal Contacts					8	0									0	1	Lead Lengths for 1.57 (.062) PCB	
QTY of Signal Contacts					2	4									0	2	Lead Lengths for 2.36 (.093) PCB	
QTY of Power Contacts							0	1										
QTY of Power Contacts								0	2									
Plating - Gold	L																	
Plating - Tin	T																	
										R							Configuration	
										V								Configuration

* Screw down only available on right angle

TEMPERATURE CHART



NOTE: Temperature rise curve represents 1x8 PowerMod PSX Power Connectors with all contacts energized. Temperature rise in other configurations is very similar. Test was conducted in open air with #10 AWG solid wire, soldered to PCB tails.

HEADQUARTERS: Anderson Power Products®, 13 Pratts Junction Road, Sterling, MA 01564-2305 USA T:978-422-3600 F:978-422-0128

EUROPE: Anderson Power Products® Ltd., Unit 3, Europa Court, Europa Boulevard, Westbrook, Warrington, Cheshire, WA5 7TN United Kingdom T: +44 (0) 1925 428390 F: +44 (0) 1925 520203

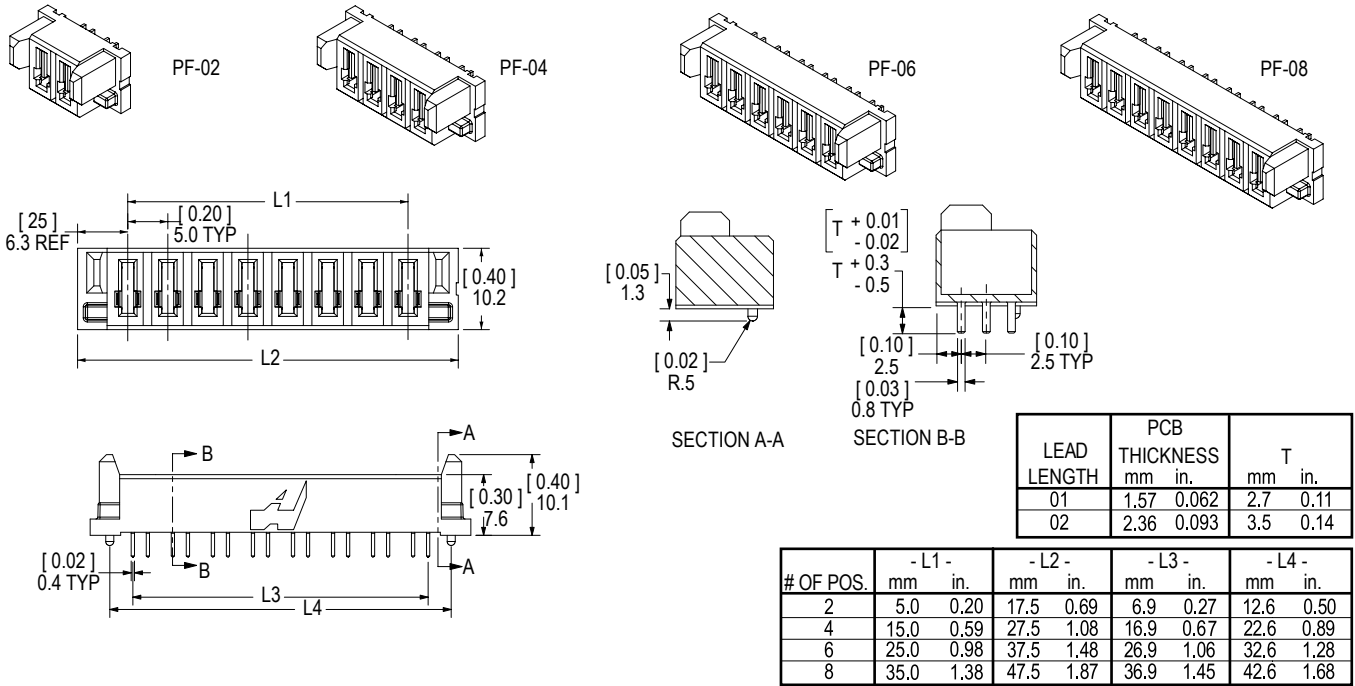
ASIA / PACIFIC: IDEAL Anderson Asia Pacific Ltd., Unit 922-928 Topsail Plaza, 11 On Sum Street, Shatin N.T., Hong Kong T:+(852) 2636 0836 F:+(852) 2635 9036

CHINA: IDEAL Anderson Technologies (Shenzhen) Ltd., Block A8 Tantou Western Industrial Park, Songgang Baoan District, Shenzhen, P.R. China 518105 T: +(86) 755 2768 2118 F: +(86) 755 2768 2218

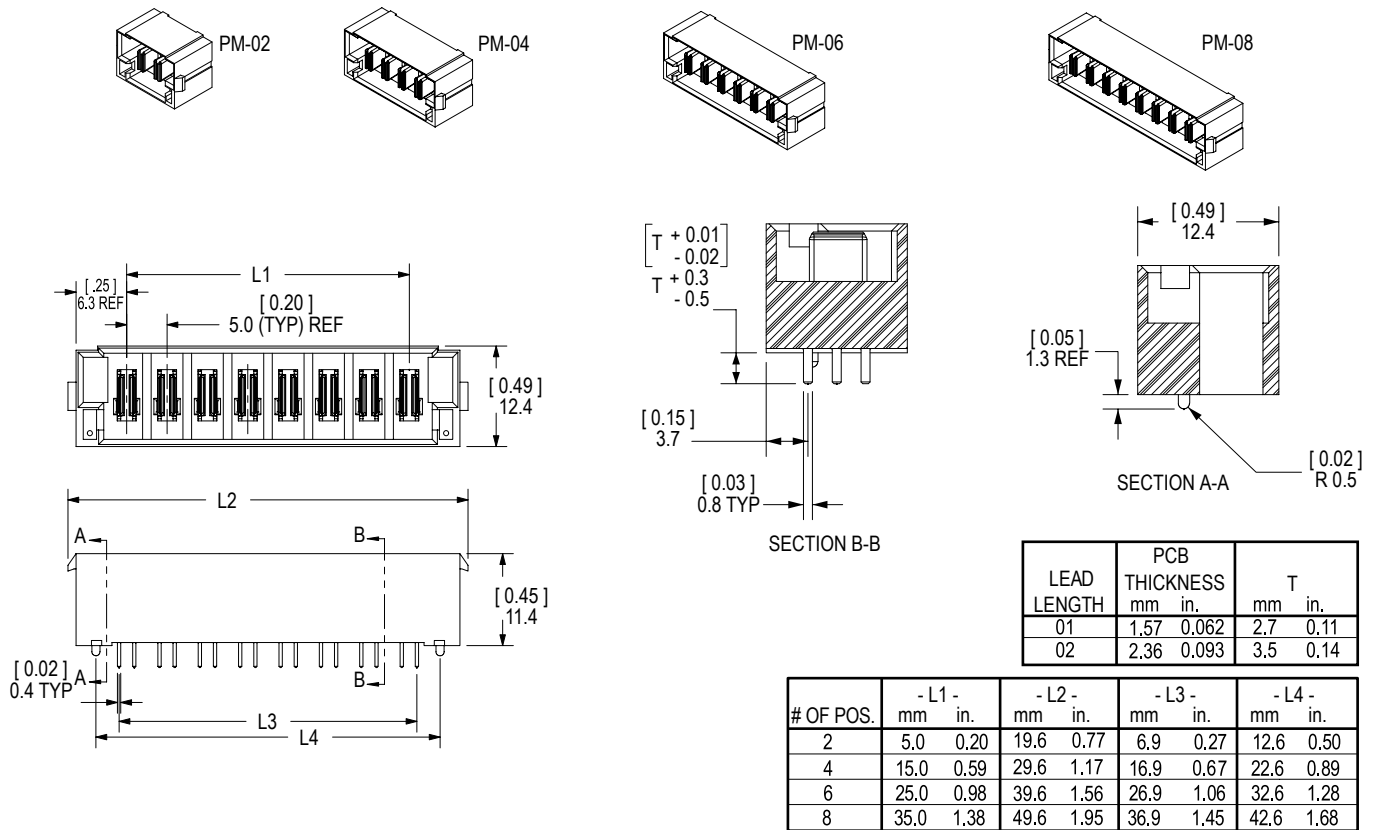
TAIWAN: IDEAL Anderson Asia Pacific Ltd., Taiwan Branch, 4F.-2, No.116, Dadun 20th St., Situn District, Taichung City 407, Taiwan (R.O.C.) T: +(886) 4 2310 6451 F:+(886) 4 2310 6460

www.andersonpower.com

FEMALE VERTICAL - POWER ONLY



MALE VERTICAL - POWER ONLY



HEADQUARTERS: Anderson Power Products®, 13 Pratts Junction Road, Sterling, MA 01564-2305 USA T:978-422-3600 F:978-422-0128

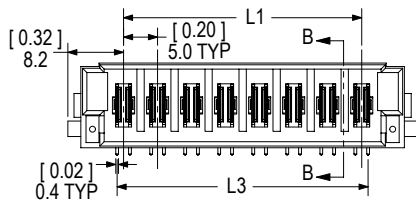
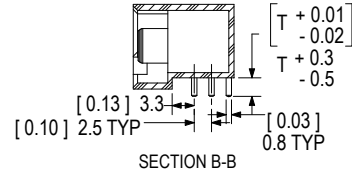
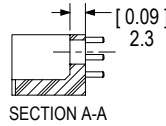
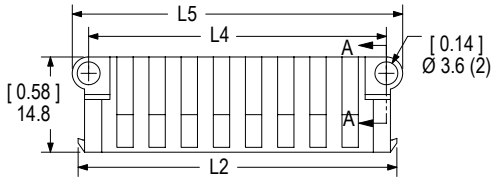
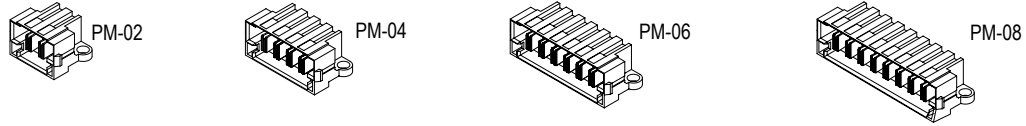
EUROPE: Anderson Power Products® Ltd., Unit 3, Europa Court, Europa Boulevard, Westbrook, Warrington, Cheshire, WA5 7TN United Kingdom T: +44 (0) 1925 428390 F: +44 (0) 1925 520203

ASIA / PACIFIC: IDEAL Anderson Asia Pacific Ltd., Unit 922-928 Topsail Plaza, 11 On Sum Street, Shatin N.T., Hong Kong T: +(852) 2636 0836 F: +(852) 2635 9036

CHINA: IDEAL Anderson Technologies (Shenzhen) Ltd., Block A8 Tantou Western Industrial Park, Songgang Baoan District, Shenzhen, P.R. China 518105 T: +(86) 755 2768 2118 F: +(86) 755 2768 2218

TAIWAN: IDEAL Anderson Asia Pacific Ltd., Taiwan Branch, 4F.-2, No. 116, Dadun 20th St., Situn District, Taichung City 407, Taiwan (R.O.C.) T: +(886) 4 2310 6451 F: +(886) 4 2310 6460

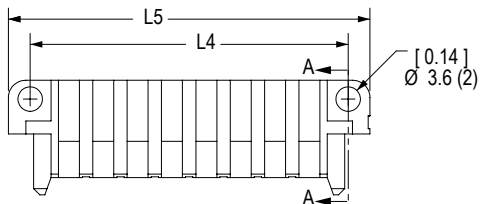
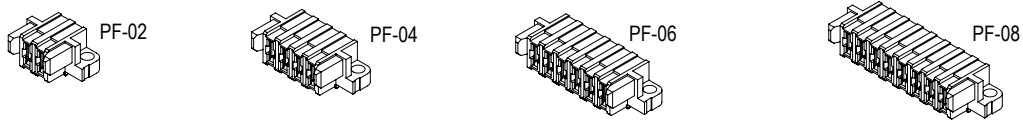
RIGHT ANGLE MALE - POWER ONLY - SCREW DOWN VERSION



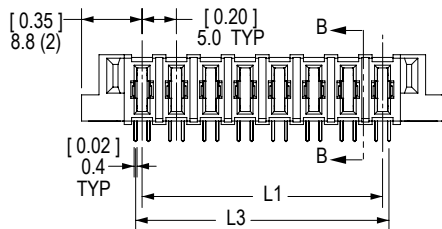
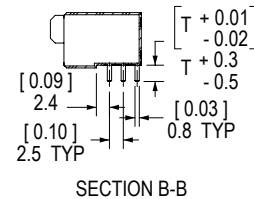
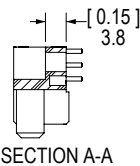
LEAD LENGTH	PCB THICKNESS		T	
	mm	in.	mm	in.
01	1.57	0.062	2.7	0.11
02	2.36	0.093	3.5	0.14

# OF POS.	- L1 -		- L2 -		- L3 -		- L4 -		- L5 -	
	mm	in.	mm	in.	mm	in.	mm	in.	mm	in.
2	5.0	0.20	19.5	0.77	6.9	0.27	16.3	0.64	21.4	0.84
4	15.0	0.59	29.5	1.16	16.9	0.67	26.3	1.04	31.4	1.24
6	25.0	0.98	39.5	1.56	26.9	1.06	36.3	1.43	41.4	1.63
8	35.0	1.38	49.5	1.95	36.9	1.45	46.3	1.82	51.4	2.02

RIGHT ANGLE FEMALE - POWER ONLY - SCREW DOWN VERSION



SCREW DOWN BOARD MOUNT, YY=02



LEAD LENGTH	PCB THICKNESS		T	
	mm	in.	mm	in.
01	1.57	0.062	2.7	0.11
02	2.36	0.093	3.5	0.14

# OF POS.	- L1 -		- L3 -		- L4 -		- L5 -	
	mm	in.	mm	in.	mm	in.	mm	in.
2	5.0	0.20	6.9	0.27	16.3	0.64	22.6	0.89
4	15.0	0.59	16.9	0.67	26.3	1.03	32.6	1.28
6	25.0	0.98	26.9	1.06	36.3	1.43	42.6	1.68
8	35.0	1.38	36.9	1.45	46.3	1.82	52.6	2.07

HEADQUARTERS: Anderson Power Products®, 13 Pratts Junction Road, Sterling, MA 01564-2305 USA T:978-422-3600 F:978-422-0128

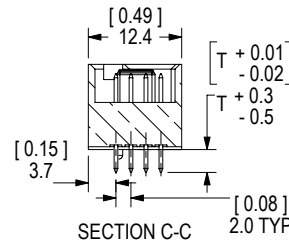
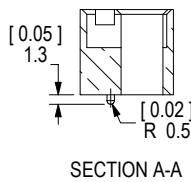
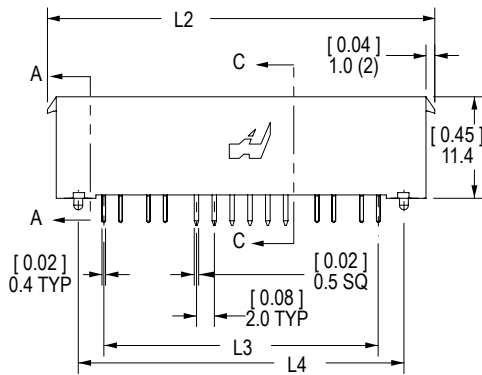
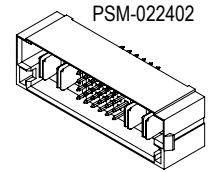
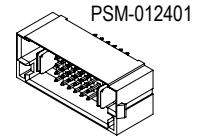
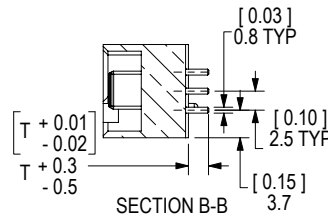
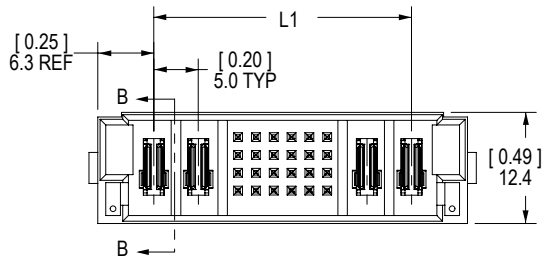
EUROPE: Anderson Power Products® Ltd., Unit 3, Europa Court, Europa Boulevard, Westbrook, Warrington, Cheshire, WA5 7TN United Kingdom T: +44 (0) 1925 428390 F: +44 (0) 1925 520203

ASIA / PACIFIC: IDEAL Anderson Asia Pacific Ltd., Unit 922-928 Topsail Plaza, 11 On Sum Street, Shatin N.T., Hong Kong T: +(852) 2636 0836 F: +(852) 2635 9036

CHINA: IDEAL Anderson Technologies (Shenzhen) Ltd., Block A8 Tantou Western Industrial Park, Songgang Baoan District, Shenzhen, P.R. China 518105 T: +(86) 755 2768 2118 F: +(86) 755 2768 2218

TAIWAN: IDEAL Anderson Asia Pacific Ltd., Taiwan Branch, 4F.-2, No.116, Dadun 20th St., Situn District, Taichung City 407, Taiwan (R.O.C.) T: +(886) 4 2310 6451 F: +(886) 4 2310 6460

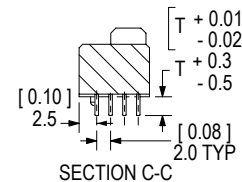
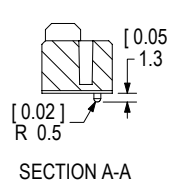
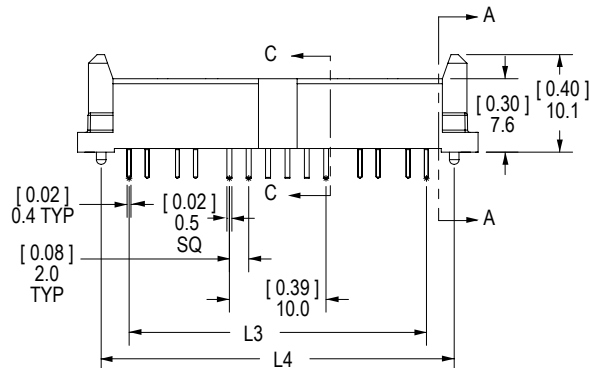
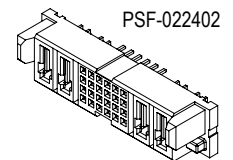
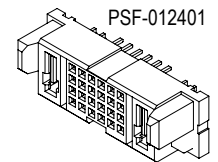
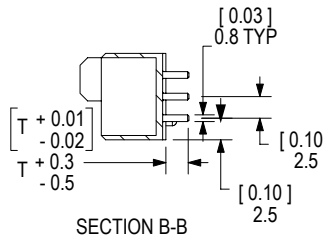
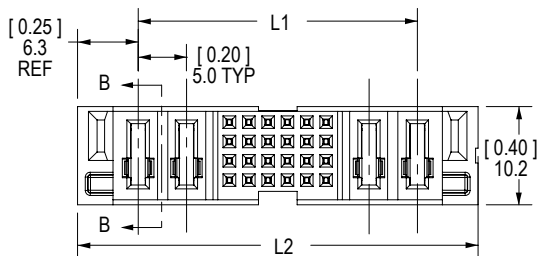
MALE VERTICAL - POWER & SIGNAL CONNECTORS



LEAD LENGTH	PCB THICKNESS		T	
	mm	in.	mm	in.
01	1.57	0.062	2.7	0.11
02	2.36	0.093	3.5	0.14

NO. POWER CONTACTS	NO. SIGNAL CONTACTS	- L1 -		- L2 -		- L3 -		- L4 -	
		mm	in.	mm	in.	mm	in.	mm	in.
2	24	18.9	0.74	33.4	1.32	20.8	0.82	26.5	1.04
4	24	28.9	1.14	43.4	1.71	30.8	1.21	36.5	1.44
2	80	46.9	1.85	61.4	2.42	48.8	1.92	54.5	2.15
4	80	56.9	2.24	71.4	2.81	58.8	2.31	64.5	2.54

FEMALE VERTICAL - POWER & SIGNAL CONNECTORS



LEAD LENGTH	PCB THICKNESS		T	
	mm	in.	mm	in.
01	1.57	0.062	2.7	0.11
02	2.36	0.093	3.5	0.14

NO. POWER CONTACTS	NO. SIGNAL CONTACTS	- L1 -		- L2 -		- L3 -		- L4 -	
		mm	in.	mm	in.	mm	in.	mm	in.
2	24	18.9	0.74	31.4	1.24	20.8	0.82	26.5	1.04
4	24	28.9	1.14	41.4	1.63	30.8	1.21	36.5	1.44
2	80	46.9	1.85	59.4	2.34	48.8	1.92	54.5	2.15
4	80	56.9	2.24	69.4	2.73	58.8	2.31	64.5	2.54

HEADQUARTERS: Anderson Power Products®, 13 Pratts Junction Road, Sterling, MA 01564-2305 USA T:978-422-3600 F:978-422-0128

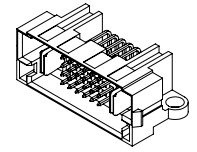
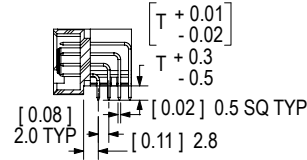
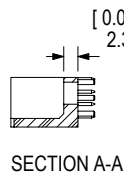
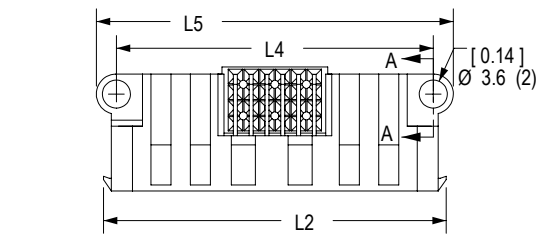
EUROPE: Anderson Power Products® Ltd., Unit 3, Europa Court, Europa Boulevard, Westbrook, Warrington, Cheshire, WA5 7TN United Kingdom T: +44 (0) 1925 428390 F: +44 (0) 1925 520203

ASIA / PACIFIC: IDEAL Anderson Asia Pacific Ltd., Unit 922-928 Topsail Plaza, 11 On Sum Street, Shatin N.T., Hong Kong T: +(852) 2636 0836 F: +(852) 2635 9036

CHINA: IDEAL Anderson Technologies (Shenzhen) Ltd., Block A8 Tantou Western Industrial Park, Songgang Baoan District, Shenzhen, P.R. China 518105 T: +(86) 755 2768 2118 F: +(86) 755 2768 2218

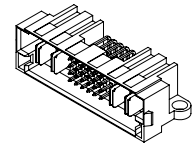
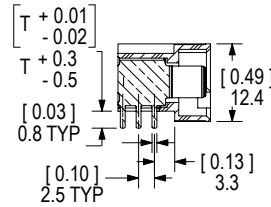
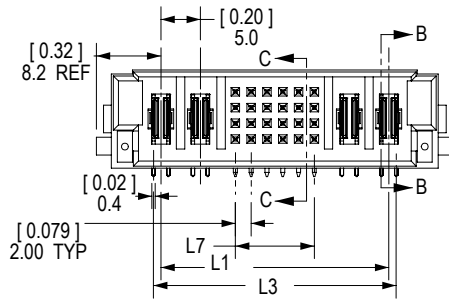
TAIWAN: IDEAL Anderson Asia Pacific Ltd., Taiwan Branch, 4F.-2, No.116, Dadun 20th St., Situn District, Taichung City 407, Taiwan (R.O.C.) T: +(886) 4 2310 6451 F: +(886) 4 2310 6460

RIGHT ANGLE MALE POWER & SIGNAL - SCREW DOWN VERSION



PSM-012401

SECTION C-C
NOTE: POWER CONTACTS REMOVED FROM VIEW FOR CLARITY



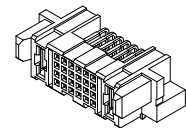
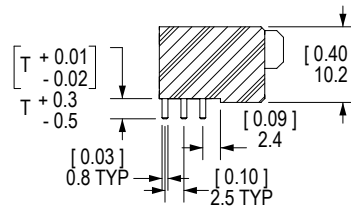
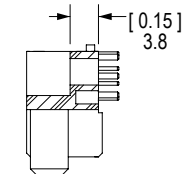
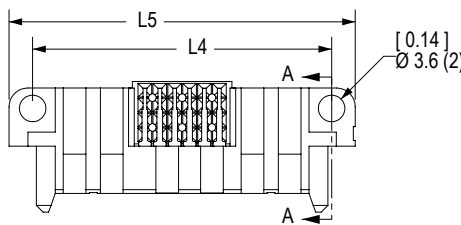
PSM-022402

SECTION B-B

LEAD LENGTH	PCB THICKNESS		T	
	mm	in.	mm	in.
01	1.57	0.062	2.7	0.11
02	2.36	0.093	3.5	0.14

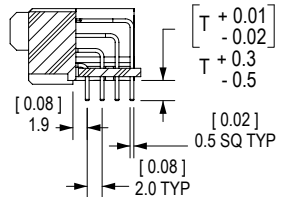
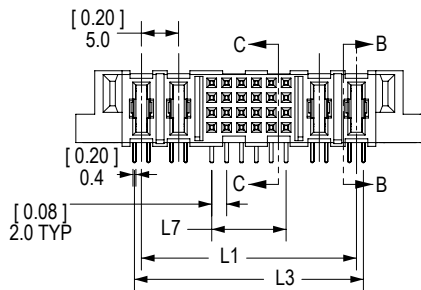
NO. POWER CONTACTS	NO. SIGNAL CONTACTS	- L1 -		- L2 -		- L3 -		- L4 -		- L5 -		- L7 -	
		mm	in.	mm	in.	mm	in.	mm	in.	mm	in.	mm	in.
2	24	18.9	0.74	33.4	1.32	20.8	0.82	30.2	1.19	35.3	1.39	10.0	0.39
4	24	28.9	1.14	43.4	1.71	30.8	1.21	40.2	1.58	45.3	1.78	10.0	0.39
2	80	46.9	1.85	61.4	2.42	48.8	1.92	58.2	2.29	63.3	2.49	38.0	1.50
4	80	56.9	2.24	71.4	2.81	58.8	2.31	68.2	2.68	73.3	2.89	38.0	1.50

RIGHT ANGLE FEMALE POWER & SIGNAL - SCREW DOWN VERSION

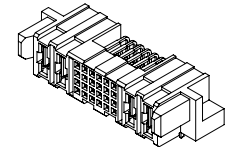


PSF-012401

SECTION B-B



SECTION C-C
NOTE: POWER CONTACTS REMOVED FROM VIEW FOR CLARITY



PSF-022402

LEAD LENGTH	PCB THICKNESS		T	
	mm	in.	mm	in.
01	1.57	0.062	2.7	0.11
02	2.36	0.093	3.5	0.14

NO. POWER CONTACTS	NO. SIGNAL CONTACTS	- L1 -		- L3 -		- L4 -		- L5 -		- L7 -	
		mm	in.	mm	in.	mm	in.	mm	in.	mm	in.
2	24	18.9	0.74	20.8	0.82	30.2	1.19	36.5	1.44	10.0	0.39
4	24	28.9	1.14	30.8	1.21	40.2	1.58	46.5	1.83	10.0	0.39
2	80	46.9	1.85	48.8	1.92	58.2	2.29	64.5	2.54	38.0	1.50
4	80	56.9	2.24	58.8	2.31	68.2	2.68	74.5	2.93	38.0	1.50

HEADQUARTERS: Anderson Power Products®, 13 Pratts Junction Road, Sterling, MA 01564-2305 USA T:978-422-3600 F:978-422-0128

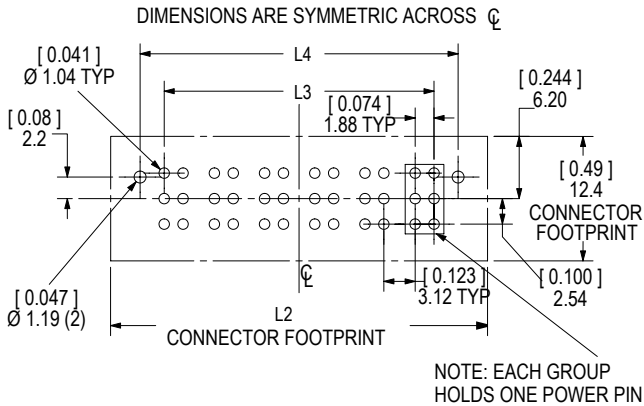
EUROPE: Anderson Power Products® Ltd., Unit 3, Europa Court, Europa Boulevard, Westbrook, Warrington, Cheshire, WA5 7TN United Kingdom T: +44 (0) 1925 428390 F: +44 (0) 1925 520203

ASIA / PACIFIC: IDEAL Anderson Asia Pacific Ltd., Unit 922-928 Topsail Plaza, 11 On Sum Street, Shatin N.T., Hong Kong T: +(852) 2636 0836 F: +(852) 2635 9036

CHINA: IDEAL Anderson Technologies (Shenzhen) Ltd., Block A8 Tantou Western Industrial Park, Songgang Baoan District, Shenzhen, P.R. China 518105 T: +(86) 755 2768 2118 F: +(86) 755 2768 2218

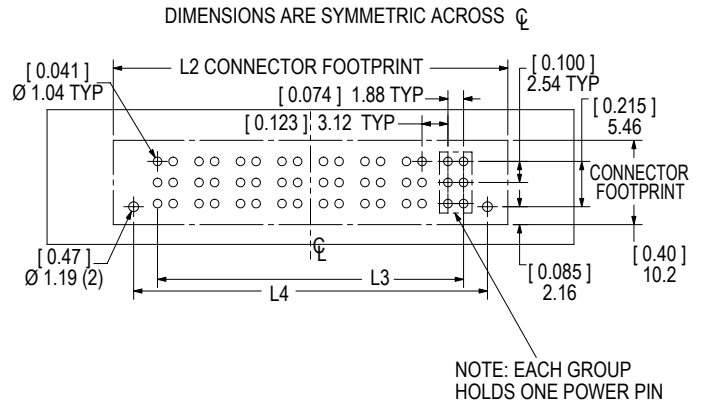
TAIWAN: IDEAL Anderson Asia Pacific Ltd., Taiwan Branch, 4F.-2, No.116, Dadun 20th St., Situn District, Taichung City 407, Taiwan (R.O.C.) T: +(886) 4 2310 6451 F: +(886) 4 2310 6460

MALE POWER VERTICAL PCB LAYOUT



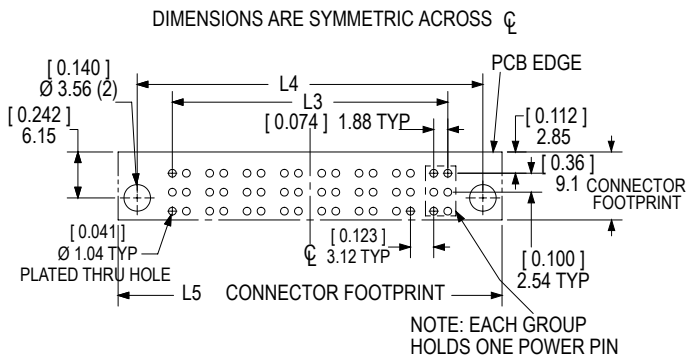
# OF POS.	- L2 - mm in.	- L3 - mm in.	- L4 - mm in.
2	19.6 0.77	6.88 0.271	12.62 0.497
4	29.6 1.17	16.88 0.665	22.62 0.891
6	39.6 1.56	26.88 1.058	32.62 1.284
8	49.6 1.95	36.88 1.452	42.62 1.678

FEMALE POWER VERTICAL PCB LAYOUT



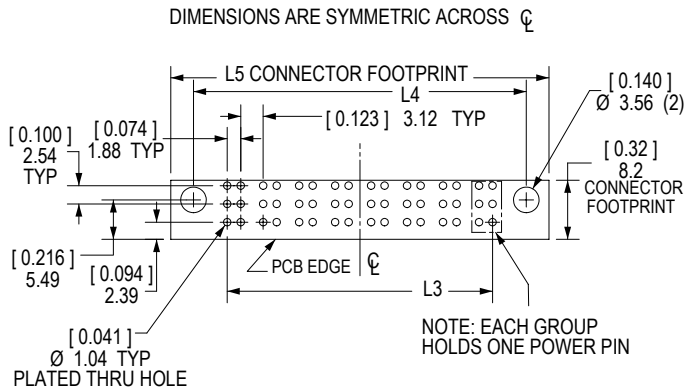
# OF POS.	- L2 - mm in.	- L3 - mm in.	- L4 - mm in.
2	17.5 0.69	6.88 0.271	12.62 0.497
4	27.5 1.08	16.88 0.665	22.62 0.891
6	37.5 1.48	26.88 1.058	32.62 1.284
8	47.5 1.87	36.88 1.452	42.62 1.678

MALE RIGHT ANGLE POWER PCB LAYOUT SCREW DOWN VERSION



# OF POS.	- L3 - mm in.	- L4 - mm in.	- L5 - mm in.
2	6.88 0.271	16.28 0.641	21.4 0.84
4	16.88 0.665	26.28 1.035	31.4 1.23
6	26.88 1.058	36.28 1.428	41.4 1.63
8	36.88 1.452	46.28 1.822	51.4 2.02

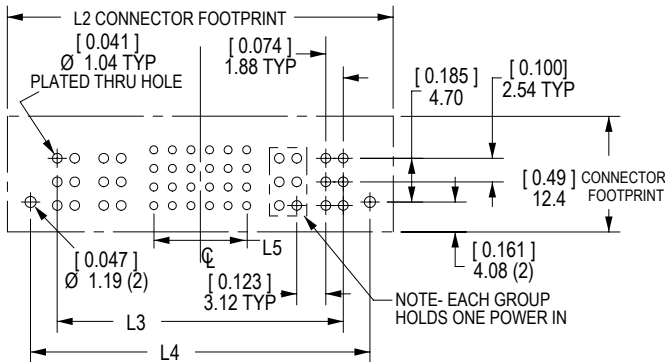
FEMALE RIGHT ANGLE POWER PCB LAYOUT SCREW DOWN VERSION



# OF POS.	- L3 - mm in.	- L4 - mm in.	- L5 - mm in.
2	6.88 0.271	16.28 0.641	22.6 0.89
4	16.88 0.665	26.28 1.035	32.6 1.28
6	26.88 1.058	36.28 1.428	42.6 1.68
8	36.88 1.452	46.28 1.822	52.6 2.07

MALE POWER & SIGNAL VERTICAL

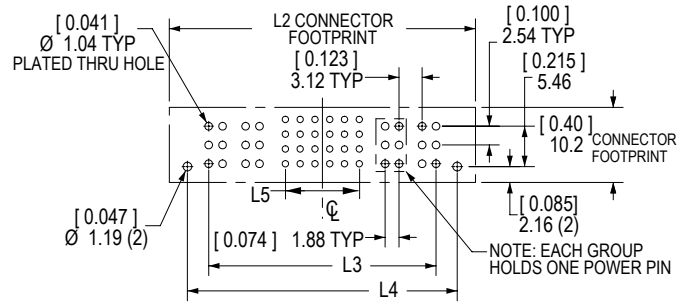
DIMENSIONS SYMMETRIC ACROSS \varnothing



NO. POWER CONTACTS	NO. SIGNAL CONTACTS	- L2 - mm in.	- L3 - mm in.	- L4 - mm in.	- L5 - mm in.
2	24	33.4 / 1.32	20.77 / 0.818	26.54 / 1.045	10.00 / 0.394
4	24	43.4 / 1.71	30.77 / 1.211	36.54 / 1.439	10.00 / 0.394
2	80	61.4 / 2.42	48.77 / 1.920	54.54 / 2.147	38.00 / 1.496
4	80	71.4 / 2.81	54.77 / 2.156	64.54 / 2.541	38.00 / 1.496

FEMALE POWER & SIGNAL VERTICAL

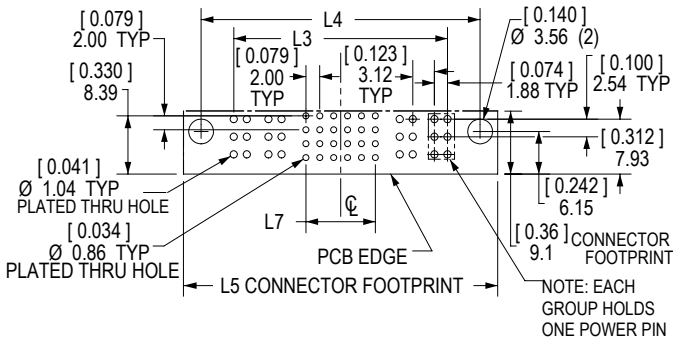
DIMENSIONS SYMMETRIC ACROSS \varnothing



NO. POWER CONTACTS	NO. SIGNAL CONTACTS	- L2 - mm in.	- L3 - mm in.	- L4 - mm in.	- L5 - mm in.
2	24	31.4 / 1.24	20.77 / 0.818	26.54 / 1.045	10.00 / 0.394
4	24	41.4 / 1.63	30.77 / 1.211	36.54 / 1.439	10.00 / 0.394
2	80	59.4 / 2.34	48.77 / 1.920	54.54 / 2.147	38.00 / 1.496
4	80	69.4 / 2.73	54.77 / 2.156	64.54 / 2.541	38.00 / 1.496

MALE RIGHT ANGLE POWER & SIGNAL SCREW DOWN VERSION

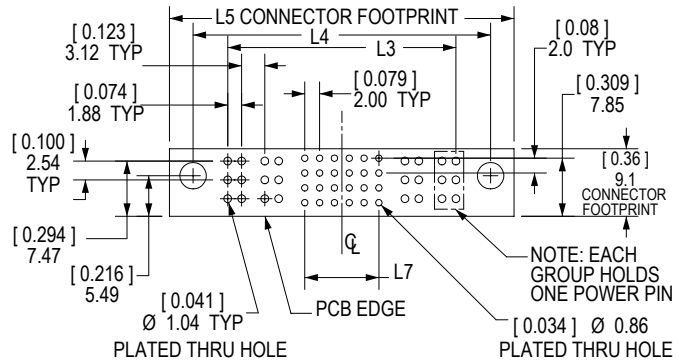
DIMENSIONS SYMMETRIC ACROSS \varnothing



NO. POWER CONTACTS	NO. SIGNAL CONTACTS	- L3 - mm in.	- L4 - mm in.	- L5 - mm in.	- L7 - mm in.
2	24	20.77 / 0.818	30.17 / 1.188	35.3 / 1.39	10.00 / 0.394
4	24	30.77 / 1.211	40.17 / 1.581	45.3 / 1.78	10.00 / 0.394
2	80	48.77 / 1.920	58.74 / 2.313	63.3 / 2.49	38.00 / 1.496
4	80	58.77 / 2.314	68.17 / 2.684	73.3 / 2.89	38.00 / 1.496

FEMALE RIGHT ANGLE POWER & SIGNAL SCREW DOWN VERSION

DIMENSIONS ARE SYMMETRIC ACROSS \varnothing



NO. POWER CONTACTS	NO. SIGNAL CONTACTS	- L3 - mm in.	- L4 - mm in.	- L5 - mm in.	- L7 - mm in.
2	24	20.77 / 0.818	30.17 / 1.188	36.5 / 1.44	10.00 / 0.394
4	24	30.77 / 1.211	40.17 / 1.581	46.5 / 1.83	10.00 / 0.394
2	80	48.77 / 1.920	58.74 / 2.313	64.5 / 2.54	38.00 / 1.496
4	80	58.77 / 2.314	68.17 / 2.684	74.5 / 2.93	38.00 / 1.496